

Single-cell delineation of lineage and genetic identity in the mouse brain


<https://doi.org/10.1038/s41586-021-04237-0>

Received: 15 January 2021

Accepted: 12 November 2021

Published online: 15 December 2021

Open access

 Check for updates

Rachel C. Bandler^{1,2,3,11}, Ilaria Vitali^{1,11}, Ryan N. Delgado^{4,5,6,11}, May C. Ho¹, Elena Dvoretzskova¹, Josue S. Ibarra Molinas¹, Paul W. Frazel², Maesoumeh Mohammadkhan², Robert Machold², Sophia Maedler⁷, Shane A. Liddelow^{2,8,9}, Tomasz J. Nowakowski^{4,5,6}, Gord Fishell^{3,10} & Christian Mayer^{1,12}

During neurogenesis, mitotic progenitor cells lining the ventricles of the embryonic mouse brain undergo their final rounds of cell division, giving rise to a wide spectrum of postmitotic neurons and glia^{1,2}. The link between developmental lineage and cell-type diversity remains an open question. Here we used massively parallel tagging of progenitors to track clonal relationships and transcriptomic signatures during mouse forebrain development. We quantified clonal divergence and convergence across all major cell classes postnatally, and found diverse types of GABAergic neuron that share a common lineage. Divergence of GABAergic clones occurred during embryogenesis upon cell-cycle exit, suggesting that differentiation into subtypes is initiated as a lineage-dependent process at the progenitor cell level.

The central nervous system consists of diverse types of neurons and glia that vary widely in morphology, physiology, connectivity and molecular markers^{3,4}. During development, molecular diversity is initially reflected in the regional expression of a narrow set of transcription factors in mitotic progenitors³. Transcriptional signatures that distinguish mature neuronal subtypes emerge only after cell-cycle exit and become more sharply defined during postnatal development^{1,2,5–7}. The extent to which developmental trajectories are predetermined by specified progenitor lineages during mitotic stages, or emerge through interactions with the environment later in development, remains an open question.

Although previous lineage analyses have elucidated the spatial distribution of clones, they provided little information regarding subtype identities of sister cells^{8–12}. More recently, breakthroughs in cellular barcoding strategies and single-cell sequencing^{13–21} have facilitated the recording of lineage tags and gene expression profiles in *in vitro* systems²², in zebrafish^{20,23,24} and in mouse embryogenesis²⁵, but have not yet been used to study neurogenesis in the mouse forebrain.

Here we combined high-throughput single-cell RNA sequencing (scRNA-seq) with massively parallel tagging of progenitors to reconstruct lineage relationships during neurogenesis of the forebrain. We focus our analysis on GABAergic neurons, which displayed a surprising degree of clonal divergence among different types of inhibitory neurons. We found that immediately after cell-cycle exit, GABAergic neurons that originated from the same mitotic progenitor diverged into different developmental trajectories. Our findings thus revealed that differentiation into GABAergic subtypes is initiated as a lineage-dependent process at the progenitor cell level.

Capture of gene expression and lineages

To determine lineage relationships of diverse cell types in the mouse forebrain, we first implemented a lentiviral lineage barcoding method called STICR (scRNA-seq-compatible tracer for identifying clonal relationships; Fig. 1a, Extended Data Fig. 1a, see companion paper²⁶), which enables massively parallel tagging of single cells using a high-diversity lentiviral library that encodes synthetic oligonucleotide sequences (lineage barcodes). The STICR tag library was introduced via *in utero* injections into the lateral ventricles of mouse embryos at embryonic day 10.5 (E10.5; STICR^{E10}), E12.5 (STICR^{E12}), E13.5 (STICR^{E13}) and E14.5 (STICR^{E14}), stages that encompass the peak of neurogenesis. This resulted in labelling of mitotic progenitors along the ventricles and their daughter cells that migrated throughout the forebrain, including the cortex, basal ganglia, hippocampus and olfactory bulb (OB) (Fig. 1b, Extended Data Fig. 1b). We waited until postnatal stages when labelled cells differentiated into mature cell types, then dissociated forebrain tissue, FACS-enriched the virally infected cells by selecting for enhanced GFP (eGFP) expression, and performed scRNA-seq with the 10x Chromium System (Fig. 1a, Extended Data Fig. 1c). We analysed transcriptomes from 65,700 high-quality cells that passed filtering (see Methods). To group cells on the basis of patterns of gene expression, we performed a principal components analysis²⁷ and batch normalized the different replicates using Harmony²⁸, followed by a UMAP visualization and clustering analysis (Extended Data Fig. 1d, Supplementary Data 1), and tracked the position of clonally related cells in the transcriptomic cell-state landscape (Extended Data Fig. 1e–h). The average and maximum size of multicellular clones was larger when the lentiviral library was introduced at E10.5 than at E12.5 or E14.5, when mitotic progenitors presumably undergo fewer divisions (Fig. 1c).

¹Max Planck Institute of Neurobiology, Martinsried, Germany. ²NYU Neuroscience Institute, Langone Medical Center, New York, NY, USA. ³Broad Institute, Stanley Center for Psychiatric Research, Cambridge, MA, USA. ⁴Department of Anatomy, University of California, San Francisco, CA, USA. ⁵Department of Psychiatry, University of California, San Francisco, CA, USA. ⁶Eli and Edythe Broad Center for Regeneration Medicine and Stem Cell Research, University of California, San Francisco, CA, USA. ⁷Max Planck Institute of Biochemistry, Martinsried, Germany. ⁸Department of Neuroscience and Physiology, New York University Grossman School of Medicine, New York, NY, USA. ⁹Department of Ophthalmology, New York University Grossman School of Medicine, New York, NY, USA. ¹⁰Harvard Medical School, Department of Neurobiology, Boston, MA, USA. ¹¹These authors contributed equally: Rachel C. Bandler, Ilaria Vitali, Ryan N. Delgado. ¹²e-mail: cmayer@neuro.mpg.de

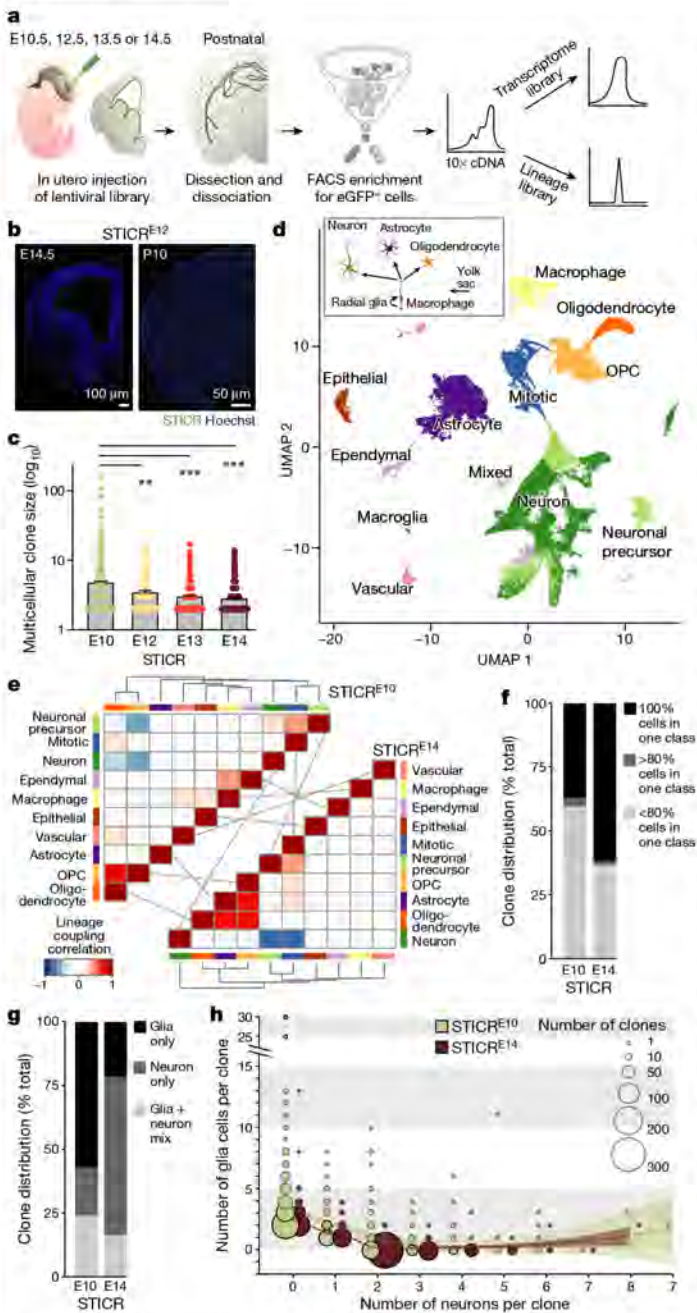


Fig. 1 | Clonal relationships of forebrain cell classes determined via simultaneous capture of transcriptome and lineage barcodes from single cells. **a**, Schematic of STICR experimental workflow. **b**, Images of coronal brain sections injected with STICR. **c**, Quantification of the average clone size. The error bars indicate s.e.m. Each dot represents a clone. $n = 1,117$ for STICR^{E10}, $n = 169$ for STICR^{E12}, $n = 349$ for STICR^{E13} and $n = 1,407$ for STICR^{E14}. One-way analysis of variance (ANOVA) with Tukey post-hoc test was performed; ** $P < 0.0015$, *** $P < 0.0001$. **d**, Uniform manifold approximation and projection (UMAP) plot of single cells coloured by cell classes. In the inset, a schematic of cell class origins. **e**, Heatmaps of STICR^{E10} and STICR^{E14} lineage coupling scores between pairs of cell classes, clustered by correlation distance and linkage. The light grey lines link classes across stages. **f**, Quantification of clones with 100%, more than 80%, and less than 80% of cells within a single class. **g**, Quantification of clones containing neurons, glia or a mix. **h**, Number of neurons and glial cells per clone is plotted against one another. The dotted line represents a smooth local regression; the shadow represents the 95% confidence interval.

During embryogenesis, asymmetrically dividing radial glia and transiently amplifying mitotic progenitors along the ventricular surface give rise to postmitotic neurons, astrocytes and oligodendrocytes^{3,4,29–32}

(Fig. 1d). To quantify clonal relationships between cell classes, we assigned the 41 clusters into cell classes (Fig. 1d) based on the co-expression of multiple marker genes (Extended Data Fig. 2a, b, Supplementary Data 2) and counted the distribution of STICR tags across cell classes (Extended Data Fig. 2c, d). Next, we assessed the likelihood of recovering shared lineage barcodes from all pairs of cell classes and quantified lineage coupling by calculating a z-score for clone counts with respect to a random distribution (see Methods)²⁴. Hierarchical clustering of the pairwise correlation between coupling scores revealed structured groups, which comprised clonally related cell classes (Fig. 1e). STICR^{E10} and STICR^{E14} clones stayed predominantly within a class (Fig. 1e). However, STICR^{E10} showed stronger coupling between oligodendrocytes and oligodendrocyte precursor cells (OPCs), whereas STICR^{E14} showed stronger coupling between oligodendrocytes, OPCs and astrocytes (Fig. 1e). Notably, 37.2% of STICR^{E10} clones contained cells of a single class, compared with 62% of STICR^{E14} descent clones (Fig. 1f). Moreover, 57.2% of STICR^{E10} clones were glial clones, 19% were neuronal clones and 23.8% were mixed clones (that is, clones with cells spanning multiple cell classes) versus 21.7%, 62% and 16.3%, respectively, for STICR^{E14} (Fig. 1g). STICR^{E10} mitotic progenitors produced larger clones, with up to 30 sister cells per clone, compared to STICR^{E14} mitotic progenitors, which produced up to 13 sister cells (Fig. 1h). Together, early-labelled progenitors generated a higher proportion of clones that dispersed across multiple cell classes than late-labelled progenitors that produced a majority of neuronal clones, consistent with progressive temporal fate specification of progenitors.

Clonal convergence and divergence

Our analysis thus far focused on the lineage relationships among cell classes. To gain higher resolution, we next explored clonal relationships between finer-grained subtypes. The 41 clusters were annotated on the basis of marker gene expression and mapped to anatomical brain regions using Visium Spatial Gene Expression³³ (Extended Data Figs. 3, 4, Supplementary Data 3). Of these, nine clusters were reclustered to gain a higher level of detail (for example, cluster 7 was split into clusters 7a and 7b; Fig. 2a). Hierarchical clustering of the pairwise correlation between coupling z-scores revealed structured groups of clusters (‘clonal groups’ a–y; Extended Data Fig. 5).

First, we tested whether excitatory and inhibitory neurons in the neocortex originate from the same progenitor. We identified clusters of cortical excitatory and inhibitory neurons based on the expression of canonical marker genes (*Gad1* inhibitory and *Slc17a7* excitatory) and Visium Spatial Gene Expression, and quantified their clonal relationship (Extended Data Fig. 6). In contrast to Delgado et al.²⁶ in the same issue, who found clonally related GABAergic and glutamatergic neurons in humans, we observed no evidence for shared lineages of excitatory and inhibitory cortical neurons in STICR^{E10} or STICR^{E14} mice (Extended Data Fig. 6c).

Next, we tested whether developmental histories can be predicted from the assumption that cell types with transcriptomically similar identities are clonally related. This assumption may not always hold true, because similar cell states could arise from different lineages (that is, divergence) and distinct cell states could share a lineage (that is, convergence) (Fig. 2b). To explore these possibilities, we compared hierarchies constructed from transcriptome information and hierarchies constructed from lineage coupling correlations (Fig. 2c). Seven astrocyte clusters appeared transcriptomically similar to one another, as they occupied a single clade on the transcriptome dendrogram, but largely belonged to different clades on the lineage dendrogram (Fig. 2c, clusters highlighted in purple). Moreover, we found that astrocyte lineages of the dorsal forebrain and astrocyte lineages of the ventral forebrain converged on seemingly identical astrocyte subtypes. In particular, clusters ‘3 Astrocyte *Slca12*’ and ‘12a Astrocyte *Ntrk2*’ were both clonally related to clusters ‘6 Inhibitory neuron *OB Synpr*’ and

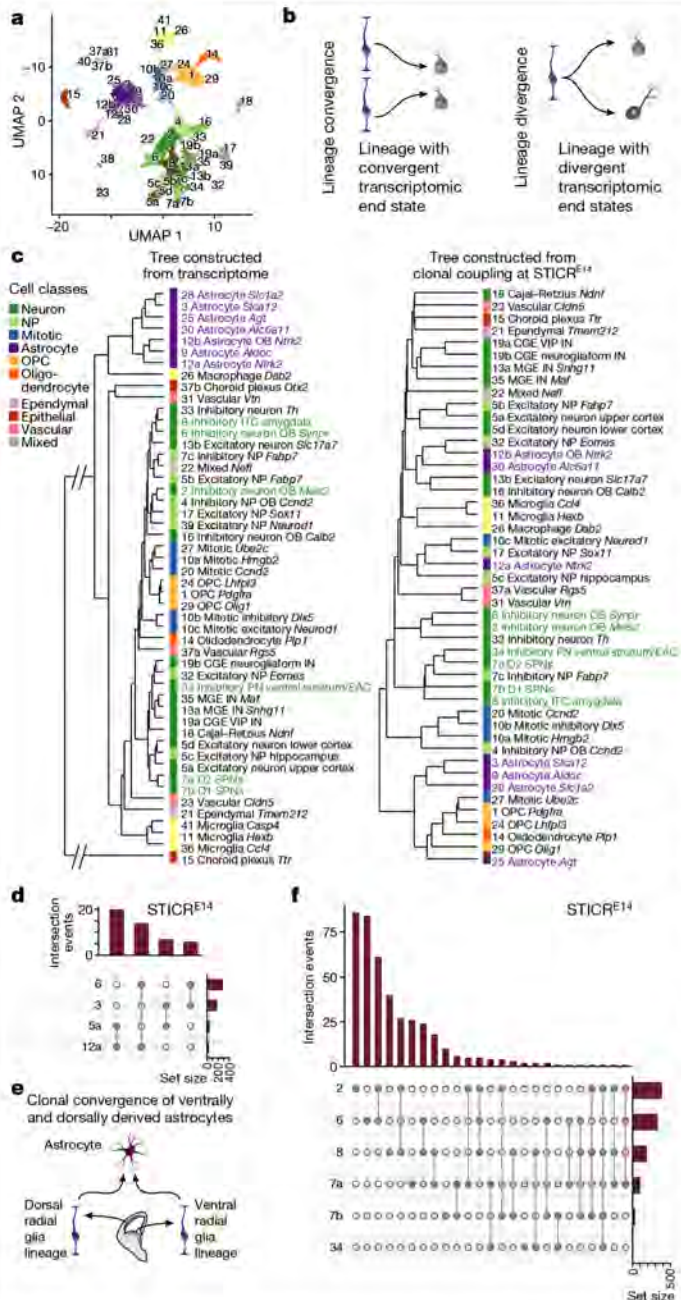


Fig. 2 | Lineage convergence and divergence in the mouse forebrain. **a**, UMAP plot of single cells from the forebrain coloured by cluster. **b**, Schematics of patterns of lineage convergence and divergence. **c**, Dendrograms representing cluster relationships based on transcriptomic similarity (left) and lineage coupling correlations (STICRE^{E14}, right). In purple are examples of lineage convergence; in green are examples of lineage divergence. CGE, caudal ganglionic eminence; EAC, central extended amygdala; IN, interneuron; MGE, medial ganglionic eminence; NP, neuronal precursor; PN, projection neuron; VIP, vasoactive intestinal polypeptide. **d**, UpSet plot of selected intersections for STICRE^{E14}. Only dispersing clones are shown. The bar graph at the top shows the number of observed intersections, and the bar graph on the right shows the number of cells per cluster. **e**, Schematic for lineage convergence of astrocyte clusters 3 and 12a. **f**, UpSet plot for selected ventral inhibitory neuron types in STICRE^{E14}. The bar graph at the top shows the number of observed intersections, and the bar graph on the right shows the number of cells per cluster.

'5a Excitatory neuron upper cortex' (Fig. 2d, Extended Data Fig. 7), which suggests that distinct ventral and dorsal radial glia can give rise to transcriptomically similar astrocyte populations (Fig. 2e). Another example

of convergence was OB neuroblasts ('4 Inhibitory NP OB *Ccnd2*') and dentate gyrus neuroblasts ('17 Excitatory NP *Sox11*'), which occupied a single clade on the transcriptome dendrogram but distant clades on the lineage dendrogram (Fig. 2c). Thus, cells originating from distinct mitotic progenitors located in different brain areas can converge to similar transcriptomic identities.

The most striking example of clonal divergence was observed for inhibitory neuron clones, which are known to derive from mitotic progenitors in the ganglionic eminences of the ventral forebrain (Fig. 2c, clusters highlighted in green). In particular, we identified six GABAergic projection neuron and interneuron clusters of the subpallium and OB that displayed high lineage coupling (Fig. 2c, Extended Data Fig. 5, see 'clonal groups' h,u,v). Neurons within these clusters included direct (D1) and indirect (D2) spiny projection neurons (SPNs) of the striatum (clusters 7b and 7a, respectively), projection neurons of the central extended amygdala (cluster 34), intercalated cells (ITCs) of the amygdala (cluster 8) and OB interneurons (clusters 2 and 6; Extended Data Fig. 8a, b). These GABAergic neurons were clonally related, although they showed drastically different transcriptomic profiles (Fig. 2c, f, Extended Data Figs. 7, 8a) and are known to have different morphologies, connectivity patterns and occupy different brain regions³. For example, ITCs of the amygdala were clonally related to interneurons of the OB and multiple GABAergic projection neuron types, including SPNs of the striatum and central extended amygdala. Moreover, both D1 and D2 SPNs were clonally related to interneurons of the OB (Fig. 2f). Next, we created three additional STICRE^{E12} datasets of anatomically dissected brain regions (the OB, striatum and amygdala) and measured the similarity between the average gene expression of clusters (Extended Data Fig. 8c, d). Clones of GABAergic neurons were distributed across different forebrain structures and frequently across transcriptomically diverse subtypes. Thus, individual progenitors of GABAergic neurons can give rise to a wide range of different GABAergic subtypes (Extended Data Fig. 8e).

Embryonic divergence of GABAergic neurons

To test whether clonal divergence of GABAergic subtypes is the result of early fate specification within embryonic progenitor zones, or rather emerges during postnatal development, we studied single-cell lineage histories when molecular diversity of cell types first occurs. Because STICRE labels mitotic progenitors indiscriminately along the embryonic ventricles, it is not suited to deliver a large number of lineage tags to a spatially defined region. To tag mitotic progenitors specifically in the ganglionic eminences, we developed a transposon-based barcoding approach (TrackerSeq; Fig. 3a, Extended Data Fig. 9a–d; see Methods) that uses the *piggyBac* transposon system to randomly integrate an eGFP reporter cassette into the genome of electroporated mitotic progenitors^{24,34}. A DNA sequence containing random nucleotides was cloned into the 3' untranslated region of eGFP, making it detectable by scRNA-seq.

We targeted TrackerSeq to ganglionic eminence progenitors at E12.5, FACS-enriched electroporated cells at E16.5, and performed scRNA-seq (Fig. 3a, b). Hierarchical clustering of TrackerSeq DNA tags organized cells into 256 distinct multicellular clones of GABAergic neurons (Extended Data Fig. 9e–h). To gain a high resolution of embryonic cell states in the ganglionic eminences, we integrated the TrackerSeq datasets with wild-type scRNA-seq datasets that we collected at E13.5 and E15.5 from the medial, caudal and lateral ganglionic eminences (Fig. 3c, Extended Data Fig. 9e, f). We performed a pseudotime trajectory analysis using Monocle3³⁵, which is a diffusion pseudotime algorithm that learns the sequence of gene expression changes and identifies developmental branch points (Extended Data Fig. 9i). In addition, we used RNA velocity³⁶, a method that compares the ratios of unspliced and spliced mRNA per gene, to predict the direction and speed of cell-state transitions across the trajectories (Extended Data Fig. 9j).

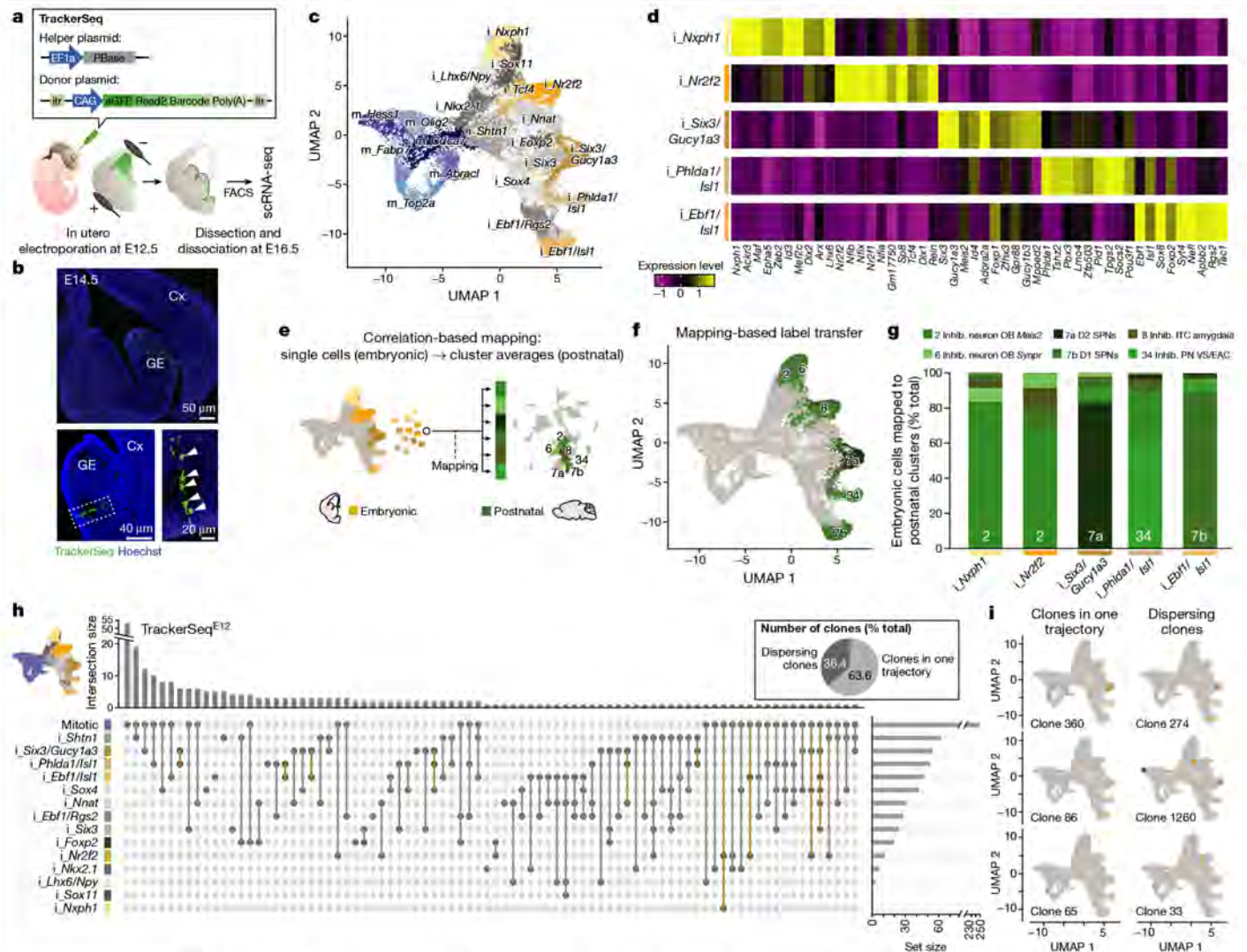


Fig. 3 | Newly born GABAergic sister cells diverge into different precursor states. **a**, Schematic of the TrackerSeq experimental workflow. PBase, *piggyBac* transposase. **b**, Images of coronal brain sections electroporated with TrackerSeq^{E12} and collected at E14.5. Cx, cortex; GE, ganglionic eminence. Magnification on the bottom right panel shows a radial cluster of newborn cells (white arrowheads). **c**, UMAP plot of integrated embryonic scRNA-seq datasets, coloured by clusters. i, inhibitory; m, mitotic. **d**, Heatmap showing the normalized expression of the top ten marker genes for the five precursor states. **e**, Schematic of the strategy for computationally mapping embryonic precursor state cells to postnatal clusters. **f**, UMAP of the embryonic dataset, with precursor state cells coloured based on the mapping results. **g**, Bar graph quantifying the correlation-based mapping of cells from the five precursor

states to selected postnatal ventral GABAergic neuron clusters. The numbers on the bars indicate the dominant mapped postnatal cluster. Inhib., inhibitory; VS, ventral striatum. **h**, UpSet plot for all intersections of TrackerSeq^{E12}. The bar graph on the top shows the number of intersections. Mitotic clusters were merged in a single cluster (mitotic). The total cell number per cluster is represented in the bar graph on the right. Intersections among precursor states are coloured in ochre. The bars are colour-coded according to Fig. 3c. The inset in the top right represents the percentage of multicellular clones that follow a single trajectory or dispersed across several precursor state trajectories. **i**, Examples of clones where sibling cells traverse a single developmental trajectory (left) or different trajectories (right) on the UMAP.

From a common pool of mitotic progenitors, five different trajectories (that is, precursor states) of postmitotic inhibitory neurons emerged soon after cell-cycle exit, which we named after the top marker genes that these clusters expressed (*'i_Six3/Gucy1a3'*, *'i_Ebf1/Isl1'*, *'i_Phlda1/Isl1'*, *'i_Nr2f2'* and *'i_Nxph1'*; Fig. 3c, d). We used a correlation-based distance metric (see Methods) to map cells from each embryonic precursor state to inhibitory clusters of the postnatal STICR dataset (Fig. 3e–g, Extended Data Fig. 9k). For example, 83% of cells from the trajectory *'i_Six3/Gucy1a3'* mapped to the postnatal cluster *'7a D2 SPNs'*, and 89% of cells from trajectory *'i_Ebf1/Isl1'* mapped to cluster *'7b D1 SPNs'* (Fig. 3g), suggesting an early emergence of postnatal signatures. Consistent with this idea, OB interneuron precursors, as well as D1 and D2 striatal precursors, maintained multiple marker genes through development (Extended Data Fig. 9l).

We next asked whether clonally related cells traverse the same or different trajectories. Notably, while cells of 63.6% of clones entered the same trajectory, 36.4% of the clones diverged into differing trajectories shortly after they exited the cell cycle (Fig. 3h, i). For example, we found sister cells located on the *'7b D1 SPN'* and *'7a D2 SPN'* trajectories, *'7a D2 SPN'* and *'8 Inhibitory ITC–amygdala'* trajectories, and the *'2 Inhibitory neuron OB Meis2'* and *'8 Inhibitory ITC–amygdala'* trajectories (Fig. 3h, i). Taken together, these data show that progenitor cells in the ganglionic eminences can produce daughter cells that traverse different developmental trajectories during peak neurogenesis. This suggests that clonal divergence into different GABAergic precursor states is initiated at the level of mitotic progenitor cells and thus as a lineage-dependent process (Extended Data Fig. 10).

Discussion

During neurogenesis, a wide range of postmitotic neurons and glia arise from mitotic progenitors lining the embryonic ventricles. The extent to which developmental histories of mature cell types can be predicted on the basis of the assumption that cell types with transcriptomically similar identities are developmentally related has remained obscure. Using methods that simultaneously capture transcriptomic signatures and lineage histories of individual cells, we found both transcriptomically similar cell types that arose from different lineages (that is, convergence) and transcriptomically distinct cell types that share a clonal relationship (that is, divergence). The most striking example of divergence was GABAergic clones stemming from mitotic progenitors in the ventral forebrain. These clones did not only disperse into distinct brain regions, but also diverged into types with grossly different transcriptomic signatures. While perhaps some degree of clonal divergence would be expected early in neurogenesis at a time when a large number of radial glial progenitors undergo symmetric proliferative divisions, our results reveal clonal divergence at later stages of neurogenesis.

In agreement with Mayer et al.¹, we found that in all ganglionic eminences, newborn GABAergic neurons diverge into different precursor states after cell-cycle exit. It was not clear whether clonally related sister cells enter the same or different precursor states (Extended Data Fig. 10). Because our new methods capture clonal histories, we were able to address this question and found that newborn sister cells often diverged in different trajectories, suggesting that mechanisms on the level of progenitors delineate genetic identity and ultimately cell fate^{37,38}. The ganglionic eminences can be divided into more than a dozen progenitor subdomains that are uniquely demarcated by the combinatorial expression of transcription factors^{39,40}. The superimposition of a cellular mechanism that gives rise to different postmitotic signatures with domain-specific factors and morphogens provides a large combinatorial framework that could explain how an enormous diversity of inhibitory types is generated in the forebrain. Whether the sequential production of different types follows a stereotypic sequence, or involves stochastic events that occur during cell-cycle exit, remains unknown. One possibility is that the sequential production of cell types depends on the interaction of progenitors with developmentally dynamic transcription factors and morphogens.

While recent work has examined how cell populations vary across species⁴¹, the methods developed in our study and Delgado et al.²⁶ in the same issue enable comparison of developmental histories of cell types across mouse and human. The identification of species-specific lineages will provide insight into the evolution of cellular diversity. Both STICR and TrackerSeq capture partial clones, which is sufficient to detect clonal divergence and convergence. However, at present, our methods can infer but not prove lineage restriction.

Somatic mutations, which are clonally inherited, contribute to numerous neurodevelopmental diseases^{42–47}. Determining lineage relationships might explain why certain subsets of cells are affected in developmental disorders. Looking forward, we anticipate that studies combining lineage information with genetic mutations will facilitate the explorations of such clinical phenotypes.

Online content

Any methods, additional references, Nature Research reporting summaries, source data, extended data, supplementary information, acknowledgements, peer review information; details of author contributions and competing interests; and statements of data and code availability are available at <https://doi.org/10.1038/s41586-021-04237-0>.

1. Mayer, C. et al. Developmental diversification of cortical inhibitory interneurons. *Nature* **555**, 457–462 (2018).
2. Di Bella, D. J. et al. Molecular logic of cellular diversification in the mouse cerebral cortex. *Nature* **595**, 554–559 (2021).

3. Lim, L., Mi, D., Llorca, A. & Marín, O. Development and functional diversification of cortical interneurons. *Neuron* **100**, 294–313 (2018).
4. Harris, K. D. & Shepherd, G. M. G. The neocortical circuit: themes and variations. *Nat. Neurosci.* **18**, 170–181 (2015).
5. Oberst, P. et al. Temporal plasticity of apical progenitors in the developing mouse neocortex. *Nature* **573**, 370–374 (2019).
6. Mi, D. et al. Early emergence of cortical interneuron diversity in the mouse embryo. *Science* **360**, 81–85 (2018).
7. Nowakowski, T. J. et al. Spatiotemporal gene expression trajectories reveal developmental hierarchies of the human cortex. *Science* **358**, 1318–1323 (2017).
8. Mayer, C. et al. Clonally related forebrain interneurons disperse broadly across both functional areas and structural boundaries. *Neuron* **87**, 989–998 (2015).
9. Harwell, C. C. et al. Wide dispersion and diversity of clonally related inhibitory interneurons. *Neuron* **87**, 999–1007 (2015).
10. Fuentesalba, L. C. et al. Embryonic origin of postnatal neural stem cells. *Cell* **161**, 1644–1655 (2015).
11. Golden, J. A., Fields-Berry, S. C. & Cepko, C. L. Construction and characterization of a highly complex retroviral library for lineage analysis. *Proc. Natl Acad. Sci. USA* **92**, 5704–5708 (1995).
12. Walsh, C. & Cepko, C. L. Widespread dispersion of neuronal clones across functional regions of the cerebral cortex. *Science* **255**, 434–440 (1992).
13. Wagner, D. E. & Klein, A. M. Lineage tracing meets single-cell omics: opportunities and challenges. *Nat. Rev. Genet.* **21**, 410–427 (2020).
14. Kong, W. et al. CellTagging: combinatorial indexing to simultaneously map lineage and identity at single-cell resolution. *Nat. Protoc.* **15**, 750–772 (2020).
15. Bowling, S. et al. An engineered CRISPR-Cas9 mouse line for simultaneous readout of lineage histories and gene expression profiles in single cells. *Cell* **181**, 1410–1422.e27 (2020).
16. Alemany, A., Florescu, M., Baron, C. S., Peterson-Maduro, J. & van Oudenaarden, A. Whole-organism clone tracing using single-cell sequencing. *Nature* **556**, 108–112 (2018).
17. Spanjaard, B. et al. Simultaneous lineage tracing and cell-type identification using CRISPR-Cas9-induced genetic scars. *Nat. Biotechnol.* **36**, 469–473 (2018).
18. Raj, B. et al. Simultaneous single-cell profiling of lineages and cell types in the vertebrate brain. *Nat. Biotechnol.* **36**, 442–450 (2018).
19. Kalhor, R. et al. Developmental barcoding of whole mouse via homing CRISPR. *Science* **361**, eaat9804 (2018).
20. McKenna, A. et al. Whole-organism lineage tracing by combinatorial and cumulative genome editing. *Science* **353**, aaf7907 (2016).
21. Cepko, C. L. et al. Lineage analysis with retroviral vectors. *Meth. Enzymol.* **327**, 118–145 (2000).
22. Biddy, B. A. et al. Single-cell mapping of lineage and identity in direct reprogramming. *Nature* **564**, 219–224 (2018).
23. Weinreb, C., Rodriguez-Fraticelli, A., Camargo, F. D. & Klein, A. M. Lineage tracing on transcriptional landscapes links state to fate during differentiation. *Science* **367**, eaaw3381 (2020).
24. Wagner, D. E. et al. Single-cell mapping of gene expression landscapes and lineage in the zebrafish embryo. *Science* **360**, 981–987 (2018).
25. Chan, M. M. et al. Molecular recording of mammalian embryogenesis. *Nature* **570**, 77–82 (2019).
26. Delgado, R. N. et al. Individual human cortical progenitors can produce excitatory and inhibitory neurons. *Nature* <https://doi.org/10.1038/s41586-021-04230-7> (2021).
27. Satija, R., Farrell, J. A., Gennert, D., Schier, A. F. & Regev, A. Spatial reconstruction of single-cell gene expression data. *Nat. Biotechnol.* **33**, 495–502 (2015).
28. Korsunsky, I. et al. Fast, sensitive and accurate integration of single-cell data with Harmony. *Nat. Methods* **16**, 1289–1296 (2019).
29. Bayraktar, O. A. et al. Astrocyte layers in the mammalian cerebral cortex revealed by a single-cell in situ transcriptomic map. *Nat. Neurosci.* **23**, 500–509 (2020).
30. Clavreul, S. et al. Cortical astrocytes develop in a plastic manner at both clonal and cellular levels. *Nat. Commun.* **10**, 4884 (2019).
31. Ge, W.-P., Miyawaki, A., Gage, F. H., Jan, Y. N. & Jan, L. Y. Local generation of glia is a major astrocyte source in postnatal cortex. *Nature* **484**, 376–380 (2012).
32. Qi, Y., Stapp, D. & Qiu, M. Origin and molecular specification of oligodendrocytes in the telencephalon. *Trends Neurosci.* **25**, 223–225 (2002).
33. Ståhl, P. L. et al. Visualization and analysis of gene expression in tissue sections by spatial transcriptomics. *Science* **353**, 78–82 (2016).
34. Ding, S. et al. Efficient transposition of the piggyBac (PB) transposon in mammalian cells and mice. *Cell* **122**, 473–483 (2005).
35. Cao, J. et al. The single-cell transcriptional landscape of mammalian organogenesis. *Nature* **566**, 496–502 (2019).
36. La Manno, G. et al. RNA velocity of single cells. *Nature* **560**, 494–498 (2018).
37. Manning, C. S. et al. Quantitative single-cell live imaging links HES5 dynamics with cell-state and fate in murine neurogenesis. *Nat. Commun.* **10**, 2835 (2019).
38. Vitali, I. et al. Progenitor hyperpolarization regulates the sequential generation of neuronal subtypes in the developing neocortex. *Cell* **174**, 1264–1276.e15 (2018).
39. Wonders, C. P. et al. A spatial bias for the origins of interneuron subgroups within the medial ganglionic eminence. *Dev. Biol.* **314**, 127–136 (2008).
40. Flames, N. et al. Delineation of multiple subpallial progenitor domains by the combinatorial expression of transcriptional codes. *J. Neurosci.* **27**, 9682–9695 (2007).
41. Bakken, T. E. et al. Comparative cellular analysis of motor cortex in human, marmoset and mouse. *Nature* **598**, 111–119 (2021).
42. Rodin, R. E. et al. The landscape of mutational mosaicism in autistic and normal human cerebral cortex. *Preprint at bioRxiv* <https://doi.org/10.1101/2020.02.11.944413> (2020).
43. Bae, T. et al. Different mutational rates and mechanisms in human cells at pregastrulation and neurogenesis. *Science* **359**, 550–555 (2018).

44. Evrony, G. D. et al. Integrated genome and transcriptome sequencing identifies a noncoding mutation in the genome replication factor DONSON as the cause of microcephaly-micromelia syndrome. *Genome Res.* **27**, 1323–1335 (2017).
45. Freed, D. & Pevsner, J. The contribution of mosaic variants to autism spectrum disorder. *PLoS Genet.* **12**, e1006245 (2016).
46. Lodato, M. A. et al. Somatic mutation in single human neurons tracks developmental and transcriptional history. *Science* **350**, 94–98 (2015).
47. Poduri, A., Evrony, G. D., Cai, X. & Walsh, C. A. Somatic mutation, genomic variation, and neurological disease. *Science* **341**, 1237758 (2013).

Publisher's note Springer Nature remains neutral with regard to jurisdictional claims in published maps and institutional affiliations.



Open Access This article is licensed under a Creative Commons Attribution 4.0 International License, which permits use, sharing, adaptation, distribution and reproduction in any medium or format, as long as you give appropriate credit to the original author(s) and the source, provide a link to the Creative Commons license, and indicate if changes were made. The images or other third party material in this article are included in the article's Creative Commons license, unless indicated otherwise in a credit line to the material. If material is not included in the article's Creative Commons license and your intended use is not permitted by statutory regulation or exceeds the permitted use, you will need to obtain permission directly from the copyright holder. To view a copy of this license, visit <http://creativecommons.org/licenses/by/4.0/>.

© The Author(s) 2021

Methods

STICR lentiviral library preparation and validation

We synthesized a high-complexity lentivirus barcode library that encodes approximately 60–70 million distinct oligonucleotide RNA sequences (STICR barcodes). STICR barcodes comprised three distinct oligonucleotide fragments cloned sequentially into a multicloning site within the 3' UTR of an enhanced green fluorescent protein (eGFP) transgene under control of a ubiquitous CAG promoter in a modified lentiviral plasmid (pSico, Addgene, #11578). Each barcode fragment was derived from one of three oligonucleotide pools comprising 500 distinct sequences, allowing for up to 125 million unique combinatorial barcode sequences (500^3). Following the ligation of each oligonucleotide fragment into the multicloning site, the plasmid library was electroporated into electrocompetent MegaX DH10B cells (Fisher, #C640003) and grown for 12 h overnight at 37 °C on LB agar plates (Fisher, BP1425-500) with carbenicillin (Fisher, #BP26481). The resulting colonies were scraped and plasmid extraction was performed using a midi-prep kit (Macherey Nagel, 740412.5). This process was repeated until all three barcode fragments were added.

Lentivirus production was performed by first transfecting HEK293 cells with the barcode library along with lentiviral helper plasmids pMDLg/pRRE (Addgene, #12253), pRSV-Rev (Addgene, #12253) and envelope protein VSV-G (Addgene, #8454) using JetPrime (PolyPlus, 114-07). HEK293 media were changed 24 h after transfection and replaced with 35 ml Ultraculture media (Lonza BE12-725F), 350 μ l sodium pyruvate (11 mg/ml stock, Thermo Fisher, 11360070), 350 μ l sodium butyrate (0.5 M stock, Sigma, B5887), and 350 μ l antibiotic/antimycotic (Thermo, 15-240-062) (<http://syntheticneurobiology.org/protocols/protocoldetail/31/12>). After an additional 48 h, media were collected, concentrated with an ultracentrifuge, and then resuspended in 50–100 μ l of sterile PBS.

To confirm that transcribed STICR barcodes can be accurately recovered using scRNA-seq, we performed a 'barnyard experiment' in which we infected separate cultures of human cortical cells (GW18 sample) and mouse 3T3 cells (ATCC) with different STICR libraries. These libraries could be distinguished from each other by a constant sequence unique to each library ('viral index'). After 3 days, we dissociated cultures with papain and FACS-isolated eGFP⁺ cells. eGFP⁺ cells from both species were then mixed together and loaded into a 10X Genomics Chromium Single Cell 3 prime kit (10X Genomics, PN-100007). Following sequencing, transcript libraries were aligned with Cell Ranger (version 3.0.2) to a hybrid mouse/human genome and droplets were determined to be either a mouse cell, human cell or multiplet. STICR barcodes were recovered (see below) and the recovered viral index sequence was used to match recovered barcode to the barcode initially used to infect each experiment. Finally, we quantified recovered viral indices for mouse, human and multiplet droplets.

To measure STICR plasmid library barcode diversity, we first digested 1 μ g of each library with XhoI and then ligated a PCR adapter containing a unique molecular identifier (UMI) to this site. Ligation products were amplified by PCR using Q5 Hot Start High Fidelity 2x Master Mix (NEB, #M0494) using primers targeting the STICR sequencing primer site and the adapter sequence using the following program: (1) 98 °C for 30 s, (2) 98 °C for 10 s, (3) 62 °C for 20 s, (4) 72 °C for 10 s, (5) repeat steps 2–4 15 times, (6) 72 °C for 2 min, and (7) 4 °C hold. Following PCR amplification, a 0.8–0.6 \times dual-sided size selection was performed using Ampure XP beads (Beckman Coulter, #A63881). The resulting libraries were sequenced to the depth of approximately 30 million reads. STICR barcode sequences were extracted using custom scripts that removed PCR duplicate reads using the UMI (see below in 'ScRNA-seq analysis and STICR barcode analysis' for a general description). Since it is prohibitively expensive to sequence the library to saturation, we extrapolated the total number of unique STICR barcodes using the Preseq⁴⁵ command `lc_extrap` and default settings. Together with the measured

relative barcode abundances, we used the extrapolated STICR barcode library size to model barcode collisions using the R (v4.0.1) programming language. Using base R functions, we simulated the labelling of a starting population of cells with a range of sizes from 10^1 to 10^6 and repeated each simulation 20,000 times. We then quantified the mean number of unique barcodes chosen for each starting cell population size. The difference between the starting cell population size and the number of unique barcodes present represented the number of collisions that had happened at that population size.

TrackerSeq library preparation and validation

TrackerSeq is a *piggyBac* transposon-based¹⁴ library, developed to be compatible with the 10x single-cell transcriptomic platform. It records the in vivo lineage history of single cells through the integration of multiple oligonucleotide sequences into the mouse genome. Each of these individual lineage barcodes is a 37-bp long synthetic nucleotide that consists of short random nucleotides bridged by fixed nucleotides. This design results in a library with a theoretical complexity of approximately 4.3 million lineage barcodes (16^8) with each barcode differing from another by at least 5 bp.

To construct the library, the *piggyBac* donor plasmid (Addgene #40973) was altered to include a number of modifications. A Read2 partial primer sequence was cloned into the 3' UTR of the eGFP to enable retrieval by the 10x platform. The sucrose gene was cloned into the vector, so that empty plasmids that fail to incorporate a lineage barcode during the cloning process are removed. Following digestion with BstXI to remove the sucrose gene, the plasmid was run on a gel and column purified. The lineage barcode oligo mix was cloned downstream of the Read2 partial primer sequence in the purified donor plasmid via multiple Gibson Assembly reactions, as previously described⁴⁹. Gibson assembly reactions (NEB, #E2611S) were then pooled and desalted with 0.025 μ m MCE membrane (Millipore, #VSWP02500) for 40 min, and finally concentrated using a SpeedVac. 3 μ l of the purified assembly is incubated with 50 μ l of NEB10- β -competent *Escherichia coli* cells (NEB, #C3019H) for 30 min at 4 °C, then electroporated at 2.0 kV, 200 Ω , 25 μ F (Bio-Rad, Gene Pulser Xcell Electroporation Systems). Electroporated *E. coli* were incubated for 90 min shaking at 37 °C and then plated into pre-warmed sucrose/ampicillin plates. The colonies were scraped off the plates after 8 h, and the plasmids were grown in LB medium with ampicillin up to OD = 0.5. The plasmid library was purified using column purification kit (Zymo Pure II Plasmid Maxiprep kit, #D4202). We first assessed the integrity of the TrackerSeq barcode libraries by sequencing the library to a depth of approximately 42 million reads to test whether any barcode was over-represented. Around 3.6 million valid lineage barcodes that had a quality score of 30 or higher were extracted from the R2 FASTQ files using Bartender⁵⁰. One thousand barcodes were randomly sampled from the extracted lineage barcodes to assess hamming distance. To group similar extracted barcodes into putative barcodes, Bartender assigns a UMI to each barcode read to handle PCR jackpotting errors, and clusters them. The cluster distance was set to 3 so that extracted barcodes within 3 bp of each other have a chance of being clustered together. A total of 2×10^5 clusters of barcodes were identified, suggesting that the barcode library has a diversity that is at least in the 10^5 range.

Mice and in utero surgeries

All mouse colonies were maintained in accordance with protocols approved by the Bavarian government at the Max Planck Institute of Neurobiology or the IACUC at the NYU Grossman School of Medicine. Swiss Webster and C57BL/6 wild-type females were used, and embryos were staged in days post-coitus, with E0.5 defined as 12:00 of the day a vaginal plug was detected after overnight mating. Timed pregnant mice were anaesthetized with isoflurane (5% induction, 2.5% during the surgery) and treated with the analgesic Metamizol (WDT). In utero surgery and injection of the STICR lentiviral library

Article

in the lateral ventricles of the embryonic mouse forebrains at E10.5–E14.5 were performed as previously described³¹. A microsyringe pump (Nanoject III Programmable Nanoliter Injector (100/240V) (#DRUM3-000-207)) was used to inject approximately 0.5 μ l of the STICR library per embryo. For embryos injected at E10.5, ultrasound backscatter microscope (UBM) was used to allow for image-guided injections. For in utero electroporation of the TrackerSeq library, E12.5 embryos were injected unilaterally with 700 nl of DNA plasmid solution made of 0.5 μ g/ μ l pEF1a-pBase (*piggyBac*-transposase; a gift from R. Platt) and the TrackerSeq library 0.5 μ g/ μ l, diluted in endo-free TE buffer and 0.002% Fast Green FCF (Sigma), into the lateral ventricle via a microsyringe pump. Embryos were then electroporated by holding each head between platinum-plated tweezer electrodes (5 mm in diameter, BTX, #45-0489) across the uterine wall, while 5 electric pulses (35 V, 50 ms at 1 Hz) were delivered with a square-wave electroporator (BTX, ECM 830)³². Pregnant dams were kept in single cages and pups were kept with their mothers, in the institutional animal facility under standard 12:12-h light–dark cycles, at a room temperature of 72° F \pm 2° F and a humidity of 30–70%.

Sample collection

Virally injected brains were collected from mouse pups between ages postnatal day 5 and day 15 (P5–P15) (Supplementary Data 1). Brains were dissected in ice-cold pre-bubbled artificial cerebrospinal fluid (aCSF), and sectioned into 400- μ m coronal sections on a Leica VT1200S Vibratome. Coronal brain sections were then dissected such that the forebrain was collected, thus excluding the thalamus, hypothalamus, brainstem and cerebellum. Alternatively, OBs, amygdalae and striata were manually dissected out from sliced brains, and processed separately. Collected tissue was then dissociated with the Miltenyi BioTech Neural Tissue Dissociation Kit (P) (#130-092-628) on the gentleMACS Dissociator according to the protocol of the manufacturer. To isolate and collect virally infected cells, flow cytometry was done using a SY3200 Cell Sorter (software WinList 3D version 8.0.) or BD FACSAria III Cell Sorter (BD FACSDiva Software, version 8.0.2) with a 100- μ m nozzle. The cell suspensions were first gated on forward scatter, then within this population based on eGFP expression. eGFP-expressing cells were collected in bulk for downstream processing on the 10x Genomics Chromium platform.

Ganglionic eminences were collected from mouse embryos at E13.5 and E15.5 (Supplementary Data 1) according to the following protocol: embryos were removed from the uterus of wild-type Swiss Webster females, and stored in ice-cold L-15 medium. Brains were removed from the embryonic skulls, and the MGE, CGE and LGE were dissected out. MGEs, CGEs and LGEs were then each pooled together from multiple embryos, so that each eminence type was processed independently, and dissociated with the Miltenyi BioTech Neural Tissue Dissociation Kit (P) (#130-092-628) on the gentleMACS Dissociator according to the protocol of the manufacturer.

For embryonic lineage tracing, we collected electroporated brains from mouse embryos at E16.5 (Supplementary Data 1) in Leibowitz medium with 5% FBS. Papain dissociation system was carried out according to the recommended protocol (Wortington, #LK003150), and to isolate positive cells, flow cytometry was done using a BD FACSAria III Cell Sorter (BD FACSDiva Software, version 8.0.2) with a 100- μ m nozzle. For all FACS experiments, non-eGFP-expressing brain tissue was used as a negative control for excluding background fluorescence.

Immunohistochemistry

E14.5 and P10 mice were perfused with 4% PFA and post-fixed overnight in 4% PFA at 4 °C. Coronal sections (60 μ m) were performed using vibrating microtome. Immunofluorescent staining was performed as follows: sections were incubated for 1 h at room temperature in blocking solution (5% BSA and 0.3% Triton-X100 in PBS), then overnight at 4 °C with primary antibodies. Sections were rinsed three times in PBS

1X and incubated for 1 h at room temperature with the corresponding secondary antibody (1:500, Life Technologies). Three washes with PBS 1X were performed, the second wash using Hoechst staining solution (1:10,000 in PBS 1X, Invitrogen) to label nuclei, before dry mounting on slides with Fluoromount-G (Invitrogen). For imaging, the primary somatosensory area was used as region of study. Images were acquired on a Leica Sp8 confocal laser scanning microscope.

The primary antibodies used included: rabbit anti-CUX1 1:500 (Santa Cruz, #SC13024), rabbit anti-GABA 1:2,000 (Merck, #A2052), rabbit anti-GFP 1:1,000 (Invitrogen, #A11122), rabbit anti-Iba1 1:500 (Wako, #019-19741), rabbit anti-OLIG2 1:500 (Merck, #AB9610), rabbit anti-S100 β 1:500 (Merck, #S2644), and rat anti-CTIP2 [25B6] 1:500 (Abcam, #AB18465).

The secondary antibodies used were: 647 Alexa Fluor plus goat anti-rabbit (Invitrogen, #A32733), 555 Alexa Fluor goat anti-rat (Invitrogen, #A21434), and 555 Alexa Fluor goat anti-rabbit (Invitrogen, #A21428).

Preparation of RNA-seq, STICR and TrackerSeq libraries

For experiments utilizing the 10x Genomics platform, the following reagents were used: Chromium Single Cell 3' Library & Gel Bead Kit v2 (PN-120237), Chromium Single Cell 3' Chip Kit v2 (PN-120236) and Chromium i7 Multiplex Kit (PN-120262) were used according to the manufacturer's instructions in the Chromium Single Cell 3' Reagents Kits V2 User Guide; Chromium Single Cell 3' Library & Gel Bead Kit v3 (PN-1000075), Chromium Single Cell 3' Chip Kit V3 (PN-1000073) and Chromium i7 Multiplex Kit (PN-120262) were used according to the manufacturer's instructions in the Chromium Single Cell 3' Reagents Kits V3 User Guide; Chromium Single Cell 3' Library & Gel Bead Kit v3.1 (PN-1000268), Chromium Single Cell 3' Chip Kit V3.1 (PN-1000127) and Dual Index Kit TT Set A (PN-1000215) were used according to the manufacturer's instructions in the Chromium Single Cell 3' Reagents Kits V3.1 User Guide (Dual Index).

The lineage barcode library retrieved from RNA was amplified with a standard NEB protocol for Q5 Hot Start High-Fidelity 2X Master Mix (#M0945) in a 50- μ l reaction, using 10 μ l of cDNA as template. Specifically, each PCR contained: 25 μ l Q5 High-fidelity 2X Master Mix, 2.5 μ l 10 μ M P7 indexed reverse primer, 2.5 μ l 10 μ M i5 indexed forward primer, 10 μ l molecular grade H₂O, 10 μ l cDNA (for primer sequences and indices, see Supplementary Data 1). The PCR protocol for amplifying STICR lineage libraries was: (1) 98 °C for 30 s, (2) 98 °C for 10 s, (3) 62 °C for 20 s, (4) 72 °C for 10 s, (5) repeat steps 2–4 11–18 times, (6) 72 °C for 2 min, and (7) 4 °C hold. The PCR protocol for amplifying TrackerSeq lineage libraries was: (1) 98 °C for 30 s, (2) 98 °C for 10 s, (3) 63 °C for 20 s, (4) 72 °C for 10 s, (5) repeat steps 2–4 11–18 times, (6) 72 °C for 2 min, and (7) 4 °C hold. Libraries were purified with a dual-sided SPRI selection using Beckman Coulter Agencourt RNAClean XP (A63987), and quantified with an Agilent BioAnalyzer. Some STICR libraries (DI_T_199, DI_T_203, DI_T_211, DI_T_222, DI_T_233, DI_T_238, DI_T_239, DI_T_240, DI_T_241, DI_T_242, DI_T_287, DI_T_289, DI_T_304 and DI_T_305) were constructed and sequenced twice to achieve higher resolution.

Sequencing and read mapping

Transcriptome and barcode libraries were sequenced either on an Illumina NextSeq 500 at the Next Generation Sequencing Facility of the Max Planck Institute of Biochemistry, at the Genomics Core Facility at the Helmholtz Center in Munich, or on a NovaSeq at the Broad Institute. For a detailed report on each dataset, see Supplementary Data 1. Sequencing reads in FASTQ files were aligned to a reference transcriptome (mm10-2.1.0) and collapsed into UMI counts using the 10x Genomics Cell Ranger software (version 3.0.2 or 5.0.1).

Processing of STICR barcode reads

STICR barcode analysis was performed using custom scripts. First, BMap (BMap–Bushnell B.; sourceforge.net/projects/bmap/) was

used to remove low-quality reads and then extract reads containing STICR barcode sequences. Then, BMap was used to extract individual STICR barcode fragments, which were then aligned to our pre-defined fragment reference sets using Bowtie (v5.2.1)⁵³, allowing for up to two mismatches per fragment. Aligned STICR barcodes were compiled into a file containing their corresponding 10X cell barcode and 10X UMI sequences using Awk. Finally, UMI-tools (v.0.5.1)⁵⁴ was used to remove duplicate STICR barcode or cell barcode reads by UMI, allowing for 1bp mismatch in the UMI. STICR barcodes–CBC pairings with at least five distinct UMIs were retained for clonal analysis. Among cells with multiple STICR barcodes passing these criteria, we attempted to find a 'dominant' STICR barcode that we defined as containing greater than or equal to five times the number of UMI counts than the next most abundance STICR barcode. Dominant STICR barcodes meeting these criteria were considered to be the clonal barcode of their respective cells and retained for further analysis. Within metadata files, these CBC–STICR barcode pairings are referred to as tier 2, whereas CBC–STICR barcode pairs with only a single STICR barcode meeting threshold criteria are referred to as tier 1. Only CBCs associated with a single STICR barcode (tier 1) were used in this study, with the exception of the OB–amygdala–striatum experiment in Extended Data Fig. 8, where tier 2 was used. Finally, we applied an additional UMI threshold to STICR barcodes, requiring that all STICR barcode–CBC pairings used for clonal analysis have at least nine distinct UMIs. Three STICR barcodes (Index1_Bit1_F_083-Bit2_F_060-Bit3_F_055_Bit1_F_057-Bit2_F_103-Bit3_F_244 and IndexE_Bit1_F_246-Bit2_F_178-Bit3_F_497) were removed from downstream analyses, because they were present in more than one dataset. Two of the total 21 STICR datasets (CA199 and CA233) contained only single-cell clones. These datasets were retained to support single-cell cluster analysis and clone size quantification.

Processing of TrackerSeq barcode reads

Reads in the R2 FASTQ files were pre-processed so that the sequences to the left and right of the lineage barcodes (BC) were trimmed. Lineage barcodes shorter than 37 bp were discarded. Cell barcodes (Cell) were extracted from the corresponding Seurat object of the dataset to generate a cell barcode whitelist. The extracted cell barcodes and UMIs were added to the read names of the lineage barcode FASTQ files. The resulting FASTQ files were processed to output a sparse matrix in csv format, where rows were cells identified by individual cell barcodes and columns were lineage barcodes. Only Cell–UMI–BC triples supported by at least 10 reads and Cell–BC pairs with at least 6 UMI were considered for further analyses. ClonIDs were assigned to cell barcodes by clustering the matrix using Jaccard similarity and average linkage as demonstrated by Wagner and colleagues²⁴. The resulting dendrogram was cut at a height of 0.999 to obtain the clonal groupings. The clonal groupings showed that there were 4,282 barcodes distributed over 2,370 cells in the total dataset, where 56.0% of them were marked by 2 or more barcode integrations, and 8.4% of them were marked by 5 or more integrations in the total dataset. Among the inhibitory neurons featured in Fig. 3, these numbers were 85.7% and 9.5%, respectively.

Cell filtering, data normalization, batch correction and clustering of STICR datasets

The Seurat workflow (version 3.1.4) was used for cell filtering, data normalization and cluster identification in scRNA-seq datasets. Data were read into R (version 3.6.0) as a count matrix. Each dataset was filtered with cut-offs for: maximum and minimum gene expression, maximum nCount_RNA, and the percentage of total reads that aligned to the mitochondrial genome (for applied cut-offs, see Supplementary Data 1). Filtered data were then used for standard processing with Seurat. Unless otherwise indicated, gene expression values for each cell were divided by the total number of transcripts and multiplied by 10,000. These values were then log transformed using log_{1p} via the NormalizeData() function. Genes were scaled and centred using

the ScaleData() function. We used Harmony (v1.0)²⁸ within the Seurat workflow with default parameters (theta = 2, lambda = 1, sigma = 0.1) to integrate different STICR datasets. We used the first 35 Harmony embeddings for UMAP (<https://github.com/lmcinnes/umap>) visualizations and clustering analysis.

To partition cells into clusters, we constructed a shared-nearest neighbour graph based on Harmony embeddings via the FindNeighbors() function to use as input to the SLM algorithm, implemented through the FindClusters() function in Seurat (dimensions = 35, res = 1). Cluster-specific marker genes were identified by comparing cells of each cluster to cells from all other clusters. Genes were considered differentially expressed based on fold change, minimum expression and adjusted *P* value cut-offs (Supplementary Data 3). The Wilcoxon rank sum test was implemented via the Seurat function FindAllMarkers().

Clusters were manually annotated based on marker gene expression, spatial transcriptome mapping, as well as publicly available databases, primarily DropViz (dropviz.org)⁵⁵ and Mouse Brain Atlas (<http://mouse-brain.org/genesearch.html>)⁵⁶. Of the 41 unsupervised STICR clusters, 9 clusters were reclustered to gain a higher level of detail (for example, cluster 7 was split into clusters 7a and 7b; Fig. 3a). More specifically, clusters were isolated using subset() and clustered again using FindClusters(). Sub-clusters that could not be assigned to a cell type were assigned 'unknown' and excluded from the lineage analysis (0.76% of the total cells). Cluster 22, which contained sub-clusters of different classes, was labelled 'mixed'. All analyses were carried out based on refined clusters, except for panels illustrating the spatial analysis.

Lineage analysis of cell classes in STICR

To quantify clonal relationships between cell classes, Seurat clusters were merged into cell classes (Fig. 1d) based on the co-expression of multiple marker genes (neurons (*Tubb3* and *Mef2c*); neuronal precursors (*Gad1* and *Neurod2*); mitotic cells (*Ube2c* and *Top2a*); astrocytes (*Aldh1l1* and *Gfap*); oligodendrocytes (*Olig1* and *Plp1*); OPCs (*Pdgfra* and *C1ql1*); vascular cells (*Rgs5*); epithelial cells (*Trt*); ependymal cells (*Tmem212*); and macrophages (*Ccl4* and *C1qa*)) (Extended Data Fig. 2a, Supplementary Data 2). Clones were categorized as containing sister cells that were glia only (astrocyte, OPC and oligodendrocyte classes), neuron only, or glia and neuron mix (neuron, astrocyte, OPC and oligodendrocyte classes), and the number of clones in each of these three categories was quantified relative to the total number of clones at each developmental stage.

Lineage coupling z-scores and correlations for brain-wide STICR datasets

The numbers of shared clones, as well as lineage coupling z-scores and correlations were calculated for each pair of cell states based on the methods outlined by Wagner and colleagues²⁴ as follows:

1. Definitions: For a given clone c_i with n cells, and a given cell-state pair $\{s_1, s_2\}$:
 - 1.1. Let k be the number of cells of clone c_i that were assigned to either of the cell states of the pair, that is, s_1 or s_2 .
 - 1.2. Clone c_i is defined to be 'shared' between states s_1 and s_2 if $k \geq 2$, and there was at least one cell of clone c_i assigned to each state.
 - 1.3. Let p be the fraction of clone c_i that k represents, that is, $p = k/n$.
 - 1.4. A metric for the cell-state pair $\{s_1, s_2\}$ is defined as the sum, over all 'shared' clones, of the p of each clone.
2. The metric defined in (1.4) was computed for each pair of cell states, according to the observed data.
3. A distribution of values of the metric was computed for each pair of cell states in the following way:
 - 3.1. For $N = 10,000$ iterations, the following simulation was done:
 - 3.1.1. Maintaining the observed distribution of the number of cells per cell state, the state assignments of the individual cells were randomly shuffled.

- 3.1.2. The metric defined in (1.4) was computed for each pair of cell states, according to the data resulting from this simulation.
4. For each pair of cell states, its lineage coupling z-score is defined as the z-score of its observed metric computed in (2), with respect to the distribution computed in (3). Positive z-scores indicate pairs of cell states that shared more lineage barcodes than expected by chance, whereas a negative score indicates that a state pair was significantly less coupled than expected by chance.
5. For each pair of cell states, its lineage coupling correlation is defined as the correlation between all the lineage coupling z-scores of each individual cell state of the pair.

Dendrograms and UpSet plots

Dendrograms representing transcriptomic relationships were generated with the `BuildClusterTree()` function in Seurat, which constructs a phylogenetic tree relating the 'average' cell from each identity cluster. The tree is estimated on the basis of a distance matrix constructed in the gene expression space. Dendrograms representing lineage relationships were generated using the `hclust()` and `dist()` functions on lineage coupling correlations, with an average linkage clustering and Euclidean distance metric. The interrelation between cell types can only be coarsely represented in hierarchical dendrograms. Dendrograms represent overall transcriptomic similarities and dissimilarities, but they fail to capture less obvious similarities between otherwise distinct cell types. Similarly, dendrograms may represent the general nexus of clonal relationships but overlook infrequent relationships.

UpSet plots were created in R using the UpSetR library⁵⁷. For set size, we used the number of cells per cluster.

Correlation-based distance measure for amygdala, OB and striatum datasets

Amygdala, OB and striatum datasets were pre-processed as mentioned above. Cell types were manually annotated and neuronal types were divided via `subset()`. The distance between the log-normalized average cluster gene expression was calculated using the Spearman correlation-based distance measure in the `get_dist()` function and visualised using `fviz_dist()` from the R package `factoextra` v1.0.7.

Cell filtering, data normalization batch correction and clustering of embryonic datasets

The Seurat pipeline (version 3.1.4) was used for cluster identification in scRNA-seq datasets. Embryonic transcriptome datasets (MUC28072, CA303, CA300, CA302, CA299, CA301 and CA298) were read into R (version 3.6.0) as a count matrix. Each dataset was filtered with cut-offs for: maximum or minimum gene expression, maximum `nCount_RNA` and the percentage of total reads that aligned to the mitochondrial genome (for applied cut-offs, see Supplementary Data 1). In addition, embryonic datasets were filtered with `DoubletFinder` version 2.0.3 (ref.⁵⁸).

We used regularized negative binomial regression⁵⁹ to normalize UMI count data for all embryonic datasets. Cells with UMI counts for `Neurod2 > 2` and `Neurod6 > 2`, which are markers of excitatory neurons, were removed. The TrackerSeq dataset was clustered using Seurat standard procedures and clusters expressing marker genes for excitatory neurons were removed. We created an 'integrated' data assay including all embryonic datasets for downstream analysis as described by Stuart and colleagues⁶⁰. Clusters of cells were identified by a shared nearest neighbour modularity optimization-based clustering algorithm. Uniform manifold approximation and projection (UMAP) dimensional reduction (<https://github.com/lmcinnes/umap>) was applied to the integrated data assay for visualization.

Trajectory analysis of embryonic datasets

Trajectory inference and pseudotime calculations were done with `Monocle3` (ref.³⁵). RNA velocity was estimated using the R library `velocity`. R³⁶. 10x

output files were preprocessed with `velocity`, version 0.17.17 (<https://velocity.org>) using the command `velocity run 10x`. The `velocity`.R-package 'velocity.R' version 0.6 was used for RNA velocity estimation in R.

Mapping embryonic cells to postnatal clusters

To map cells from embryonic trajectories to postnatal cell types, we first selected the five embryonic Seurat clusters from the 'integrated' data assay that were located at the tip of the Monocle trajectories, as well as Seurat clusters from the postnatal STICR dataset that were identified and annotated as subpallial GABAergic neuron types. We focused on 1,855 genes that were identified as variable features at both developmental stages using the `Seurat FindVariableFeatures()` function. For these genes, we averaged the log-normalized expression in the postnatal clusters to create postnatal cell-type model vectors. We then calculated Pearson correlations between all individual cells of the embryonic clusters and the model vectors as described in Mayer et al¹. We assigned each cell to the postnatal cluster with the highest correlation, but also calculated empirical *P* values to determine the significance of the assignment by permuting the single-cell data for a random background. We left the model vectors unchanged, but permuted the single-cell expression data 100 times. For each permutation and each cell, we kept track of the largest Pearson correlation to the model vectors, and calculated a *P* value for the cluster assignment by counting what fraction of correlation scores was larger than the one used for the cluster assignment. In a final step, we turned all *P* values into false discovery rates (FDRs) and mapped only cells with an FDR < 0.1 to the postnatal clusters.

Spatial gene expression in STICR

To infer the spatial location of the clusters, the STICR datasets were integrated with the Visium Spatial Transcriptomic datasets for sagittal and coronal sections of the mouse brain provided by 10x genomics (<https://support.10xgenomics.com/spatial-gene-expression/datasets>). We applied an 'anchor'-based integration workflow in Seurat v3, which enables the probabilistic transfer of annotations from a reference to a query set. The spatial reference dataset and the lineage dataset were normalized using the `SCTransform()` function, which builds regularized negative binomial models of gene expression, and performed dimensionality reduction using the `RunPCA()` function and then performed label transfer using the functions `FindTransferAnchors()` and `TransferData()`. This procedure outputs, for each spatial spot, a probabilistic classification for each of the scRNA-seq-derived cell states. We added these predictions as a new assay in the Seurat object for visualization using the function `SpatialFeaturePlot()`.

Scatter plots

The top 100 marker genes were calculated using the Seurat function `FindMarkers()` for a selection of GABAergic clusters in the postnatal STICR dataset and the merged embryonic dataset, respectively (postnatal: '2 Inhibitory neuron OB *Meis2*', '6 Inhibitory neuron OB *Synpr*', '7a D2 SPNs', '7b D1 SPNs', '8 Inhibitory ITC amygdala', '34 Inhibitory PN ventral striatum/central extended amygdala (EAC)', '13a MGE IN *Snhg11*', '19a CGE VIP IN', '19b CGE neurogliaform IN', '13a MGE IN *Snhg11*'; embryonic: '1 *Six3/Gucy1a3*', '1 *Ebf1/Isl1*', '1 *Phlda1/Isl1*', '1 *Nr2f2*', '1 *Nxph1*'). On the basis of the correlation-based mapping of embryonic cells to postnatal clusters (see previous paragraph), we selected pairs of embryonic and adult clusters for the scatter plot. We plotted the SCT normalized average cluster gene expression of the top 100 marker genes from each stage.

Reporting summary

Further information on research design is available in the Nature Research Reporting Summary linked to this paper.

Data availability

The sequencing datasets generated for the current study are available in the Gene Expression Omnibus (GEO) under the accession number

GSE188528. Publicly available gene expression data used for cluster annotation can be accessed as follows: DropViz (dropviz.org) and Mouse Brain Atlas (<http://mousebrain.org/genesearch.html>). Visium Spatial Transcriptomic Datasets for sagittal and coronal sections of the mouse brain provided by 10x genomics (<https://support.10xgenomics.com/spatial-gene-expression/datasets>).

Code availability

The analyses described here are available on GitHub: https://github.com/mayer-lab/Bandler-et-al_lineage.

48. Daley, T. & Smith, A. D. Modeling genome coverage in single-cell sequencing. *Bioinformatics* **30**, 3159–3165 (2014).
49. Gibson, D. G. et al. Enzymatic assembly of DNA molecules up to several hundred kilobases. *Nat. Methods* **6**, 343–345 (2009).
50. Zhao, L., Liu, Z., Levy, S. F. & Wu, S. Bartender: a fast and accurate clustering algorithm to count barcode reads. *Bioinformatics* **34**, 739–747 (2018).
51. Gaiano, N., Kohtz, J. D., Turnbull, D. H. & Fishell, G. A method for rapid gain-of-function studies in the mouse embryonic nervous system. *Nat. Neurosci.* **2**, 812–819 (1999).
52. Saito, T. In vivo electroporation in the embryonic mouse central nervous system. *Nat. Protoc.* **1**, 1552–1558 (2006).
53. Langmead, B., Trapnell, C., Pop, M. & Salzberg, S. L. Ultrafast and memory-efficient alignment of short DNA sequences to the human genome. *Genome Biol.* **10**, R25 (2009).
54. Smith, T., Heger, A. & Sudbery, J. UMI-tools: modeling sequencing errors in unique molecular identifiers to improve quantification accuracy. *Genome Res.* **27**, 491–499 (2017).
55. Saunders, A. et al. Molecular diversity and specializations among the cells of the adult mouse brain. *Cell* **174**, 1015–1030.e16 (2018).
56. Zeisel, A. et al. Molecular architecture of the mouse nervous system. *Cell* **174**, 999–1014.e22 (2018).
57. Lex, A., Gehlenborg, N., Strobel, H., Vuillemot, R. & Pfister, H. UpSet: visualization of intersecting sets. *IEEE Trans. Vis. Comput. Graph.* **20**, 1983–1992 (2014).
58. McGinnis, C. S., Murrow, L. M. & Gartner, Z. J. DoubletFinder: doublet detection in single-cell RNA sequencing data using artificial nearest neighbors. *Cell Syst.* **8**, 329–337.e4 (2019).

59. Hafemeister, C. & Satija, R. Normalization and variance stabilization of single-cell RNA-seq data using regularized negative binomial regression. *Genome Biol.* **20**, 296 (2019).
60. Stuart, T. et al. Comprehensive integration of single-cell data. *Cell* **177**, 1888–1902.e21 (2019).

Acknowledgements We thank members of the Mayer laboratory, H. Baier, A. Borst, W. Denk, G. Evrony, A. Fabritius, M. Götz and R. Satija for feedback and discussion; J. Kuhl (somedonkey.com) for illustrations; M. Driessen and R. H. Kim from the MPIB Next Generation Sequencing core facility, I. Velasques and G. Eckstein from the Genomics Core facility at the Helmholtz Zentrum München (HMGU), M. Spitaler and M. Oster from the MPIB Imaging and FACS core facility, M. Gregory, C. Zollo and K. Ryan from the NYU FACS core facility, R. Kasper from the MPIB Imaging core facility, M. Fischer from the IT department and members of the MPIB/MPIB animal facility for their technical expertise. This work was supported by the Max-Planck Society, the European Research Council (ERC) under the European Union's Horizon 2020 Research and Innovation program (ERC-2018-STG, grant agreement no. 803984) (to C.M.), the Simons Foundation (to G.F.), NIH 5R01NS081297-07 (to G.F.), 1UG3MH120096-01 (to G.F.), NIH 5R01MH071679-15 (to G.F.), RF1MH121268 from NIMH a Broad Center Regenerative Medicine & Stem Cell Research Innovation Award, a gift from the Bowes Foundation (to T.J.N.), generous anonymous donors, the Cure Alzheimer's Fund, The Blas Frangione Foundation, NIH R21NS111186 (to S.A.L.), NYU School of Medicine (to S.A.L. and R.C.B.), NIH F30MH114462 (to R.C.B.), T32GM007308 (to R.C.B.) and NIH P01NS074972 (to R.M.).

Author contributions R.C.B., G.F. and C.M. conceived the project. R.C.B., I.V., M.C.H., J.S.I.M., E.D. and C.M. designed the experiments and analysed the data. I.V., R.C.B. and C.M. led experimental work, assisted by E.D., S.M., P.W.F., M.M. and R.M. R.N.D. and T.J.N. developed STICR. M.C.H. and C.M. developed TrackerSeq. M.C.H., J.S.I.M., R.N.D. and C.M. implemented the computational analyses. R.C.B., I.V. and C.M. prepared the manuscript, assisted by J.S.I.M., S.A.L. and G.F.

Funding Open access funding provided by Max Planck Society.

Competing interests S.A.L. is a founder of AstronauTx Ltd. All other authors declare no competing interests.

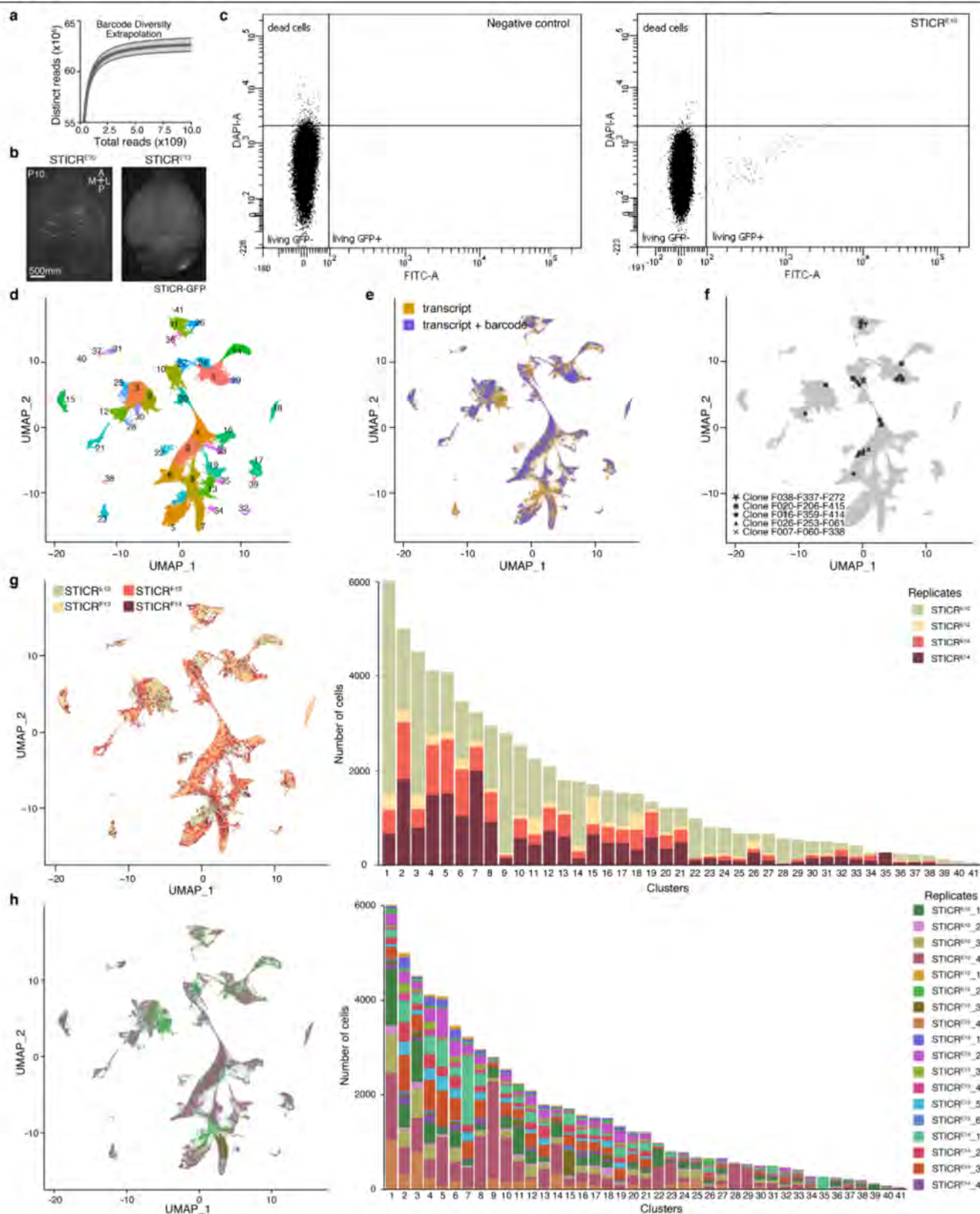
Additional information

Supplementary information The online version contains supplementary material available at <https://doi.org/10.1038/s41586-021-04237-0>.

Correspondence and requests for materials should be addressed to Christian Mayer.

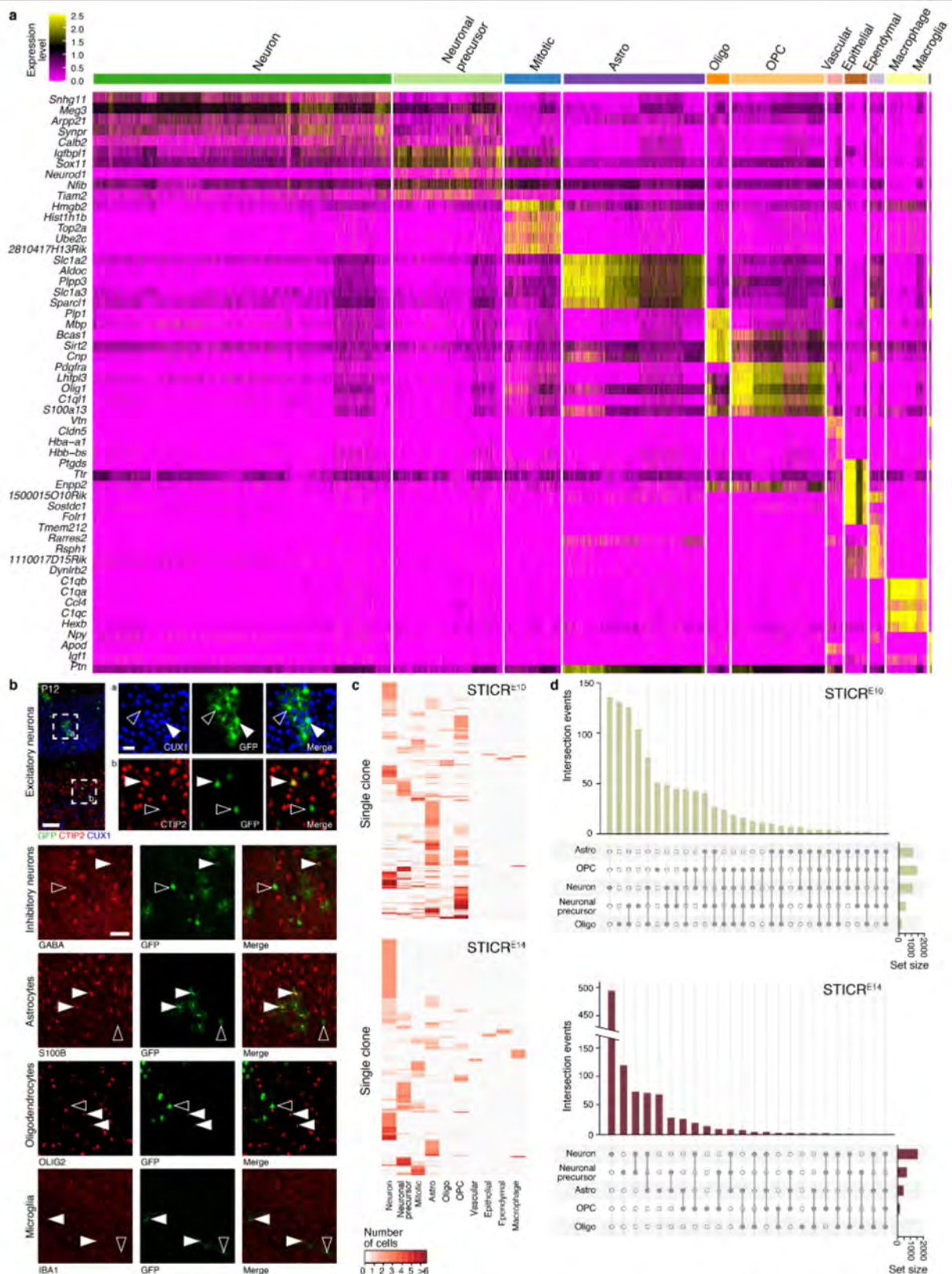
Peer review information Nature thanks Zoltan Molnar and the other, anonymous, reviewer(s) for their contribution to the peer review of this work.

Reprints and permissions information is available at <http://www.nature.com/reprints>.



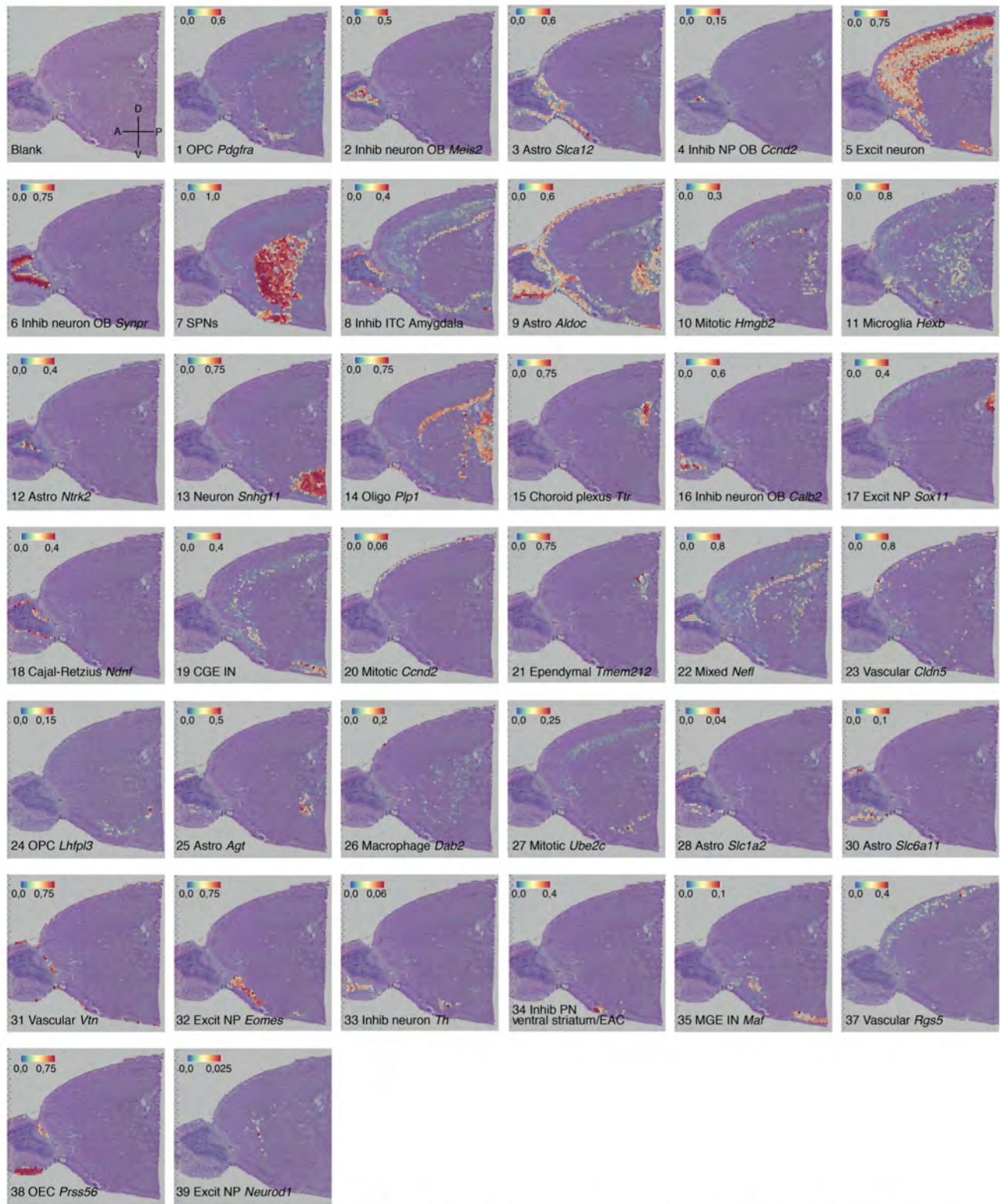
Extended Data Fig. 1 | Characterization of STICR datasets. **a**, Barcode diversity extrapolations derived from sequencing ca. 30 million reads of a representative STICR plasmid library. Mean \pm 95% CI. **b**, Images of whole mount brains injected with STICR. **c**, Representative FACS gating for negative control (matching non-injected brain) and STICR^{E10}. **d**, UMAP plot coloured and numbered for each unsupervised cluster. Each dot represents a single cell.

e, UMAP plot coloured by cells with recovered transcriptome and cells with recovered transcriptome and lineage barcode. **f**, Examples of clones on UMAP plot. Sibling cell relationships represented by shapes (dot, square, star, cross, triangle). **g**, UMAP plot and bar graph showing the distribution of recovered cells, coloured by stage of injection. **h**, UMAP plot and bar graph showing the distribution of recovered cells, coloured by experimental replicate.



Extended Data Fig. 2 | Clonal relationships among cell classes. **a**, Single-cell heatmap showing the normalised expression of the top-5 marker genes for cell classes. Bars are colour-coded based on key in Fig. 1d. **b**, Immunohistochemistry showing STICR^{E10} viral labelling of excitatory (CTIP2/CUX1) and inhibitory (GABA) neurons, astrocytes (S100B), oligodendrocytes (Olig2) and microglia (Iba1). White arrowheads indicate co-labelled cells, empty arrowheads indicate negative cells. Scale bar: 100 μ m (top), 30 μ m (insets), 50 μ m (bottom). Biological replicates, $n = 2$. **c**, Heatmap showing clonal distributions across cell

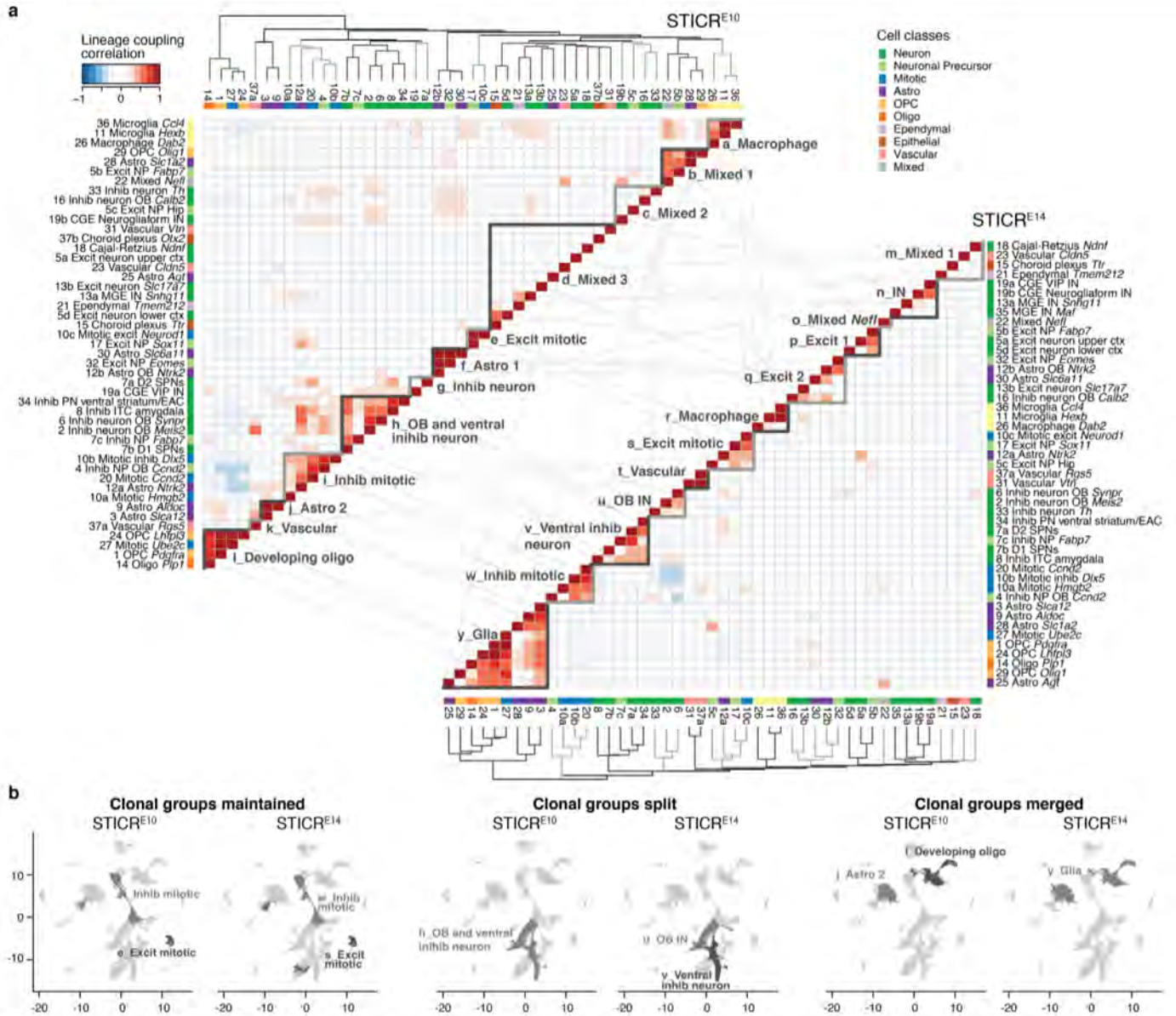
classes for STICR^{E10} (left) and STICR^{E14} (right). Every horizontal line in the plot is a clone, with number of cells per clone indicated by colour. **d**, UpSet plots displaying clonal intersections between Astrocytes, Neurons, Oligodendrocyte Precursor Cells (OPCs), Neuronal precursors and Oligodendrocytes in STICR^{E10} (top) and STICR^{E14} (bottom). Bar graphs on top indicate the number of observed intersections. The bar graphs on the right depicts total cell number per cell class.



Extended Data Fig. 4 | Spatial transcriptomic mapping of cell type clusters.

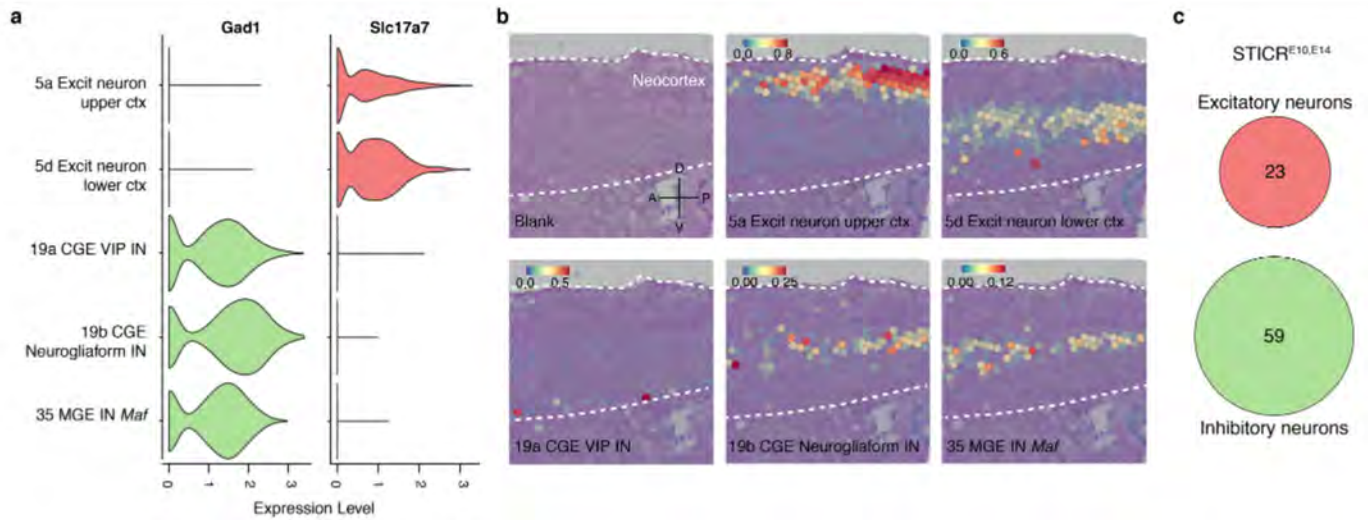
Spatial transcriptomic mapping showing localization of cell type clusters. Astro, astrocyte; CGE, caudal ganglionic eminence; Ctx, neocortex; EAC, central extended amygdala; Excit, excitatory; Hip, hippocampus; IN,

interneuron; Inhib, inhibitory; MGE, medial ganglionic eminence; NP, neuronal precursor; OB, olfactory bulb; Oligo, oligodendrocyte; OPC, oligodendrocyte precursor cell; PN, projection neuron; SPN, spiny projection neuron.



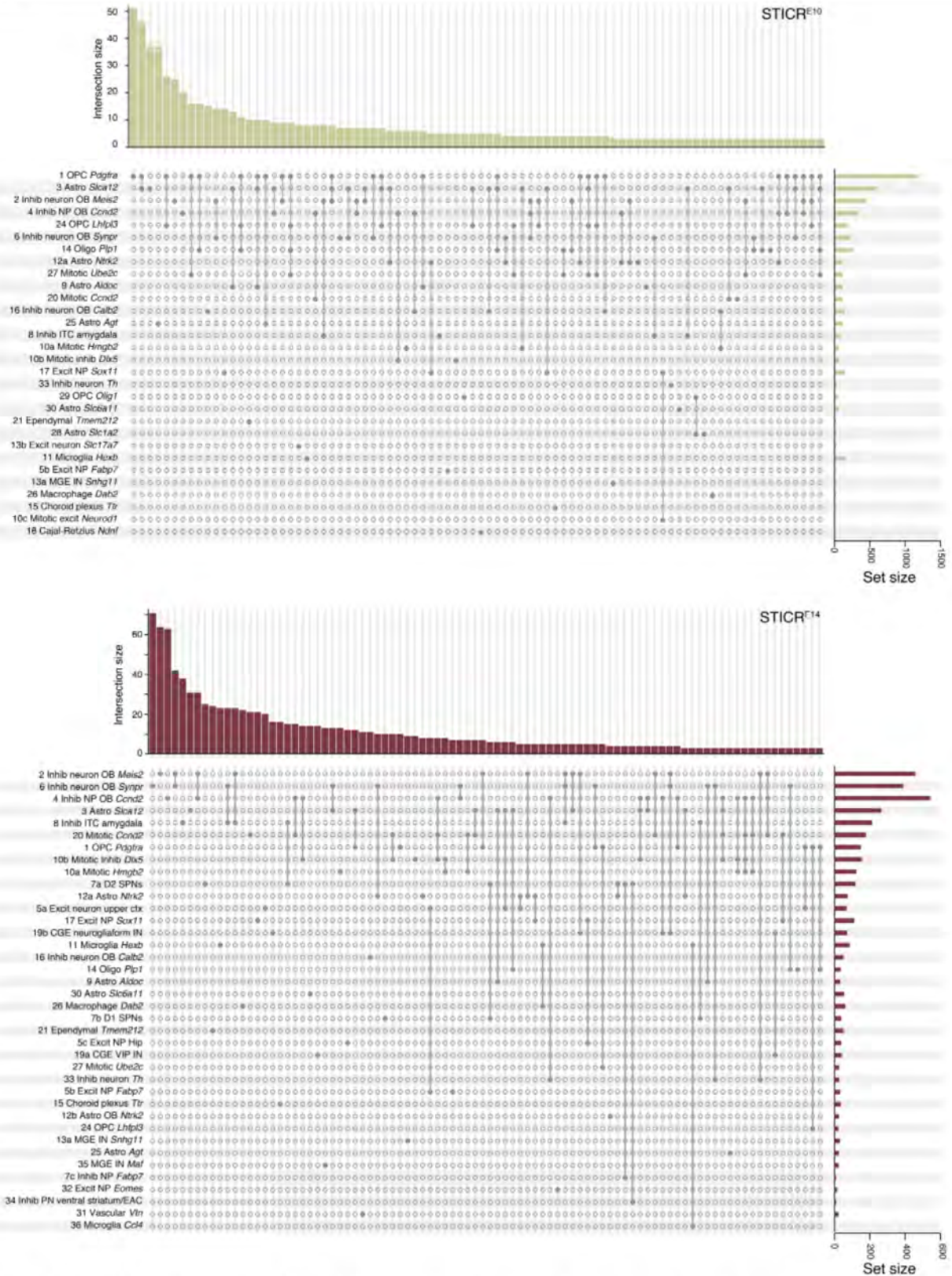
Extended Data Fig. 5 | Clonal coupling of forebrain cell types. a, Heatmaps of STICRE^{E10} (left) and STICRE^{E14} (right) lineage coupling scores between pairs of cell types, clustered by correlation distance and linkage. Values range from positive (red, coupled) to negative (blue, anti-coupled). Light-grey lines link clusters across stages. Clonal groups are surrounded with grey lines and manually annotated (a-y). Astro, astrocyte; CGE, caudal ganglionic eminence; Ctx, neocortex; EAC, central extended amygdala; Excit, excitatory; Hip,

hippocampus; IN, interneuron; Inhib, inhibitory; MGE, medial ganglionic eminence; NP, neuronal precursor; OB, olfactory bulb; Oligo, oligodendrocyte; OPC, oligodendrocyte precursor cell; PN, projection neuron; SPN, spiny projection neuron. **b**, Feature plots highlighting examples of clonal groups that are maintained (left), split (middle) or merged (right) on the UMAP plot for STICRE^{E10} and STICRE^{E14}.



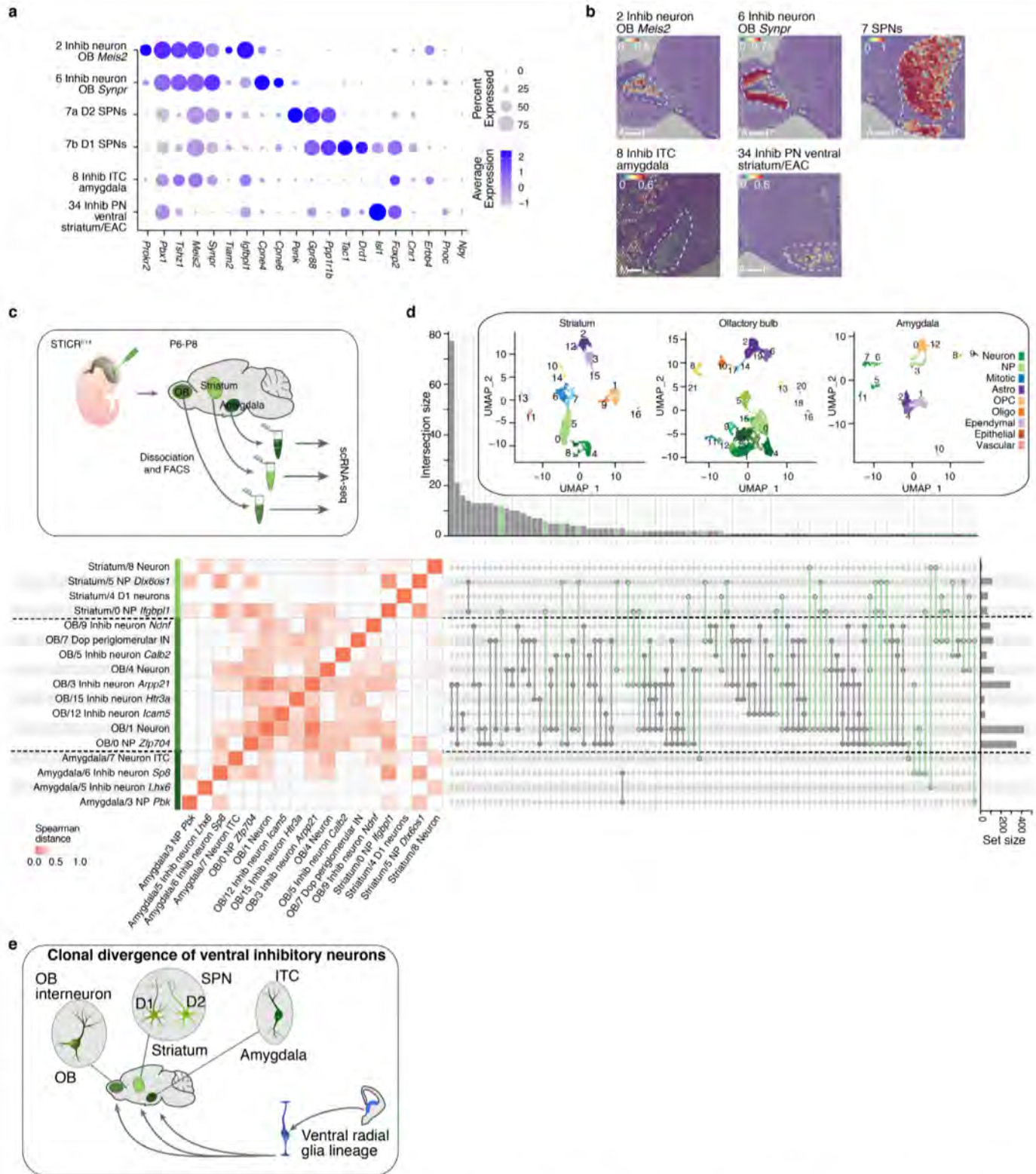
Extended Data Fig. 6 | Excitatory and inhibitory lineages do not overlap in the murine cortex. **a**, Violin plots showing the normalised marker gene expression *Slc17a7* (marker gene for excitatory neurons) and *Gad1* (marker gene for inhibitory neurons). CGE, caudal ganglionic eminence; Ctx,

neocortex; Excit, excitatory; IN, interneuron; Inhib, inhibitory; MGE, medial ganglionic eminence. **b**, Spatial transcriptomic mapping showing localization of cortical neuron clusters in the mouse brain. **c**, Venn diagram quantifying the number of clones within excitatory and inhibitory clusters.



Extended Data Fig. 7 | Clonal dispersion across cell types. UpSet plots displaying intersections for cell type clusters in STICRE^{E10} (top) and STICRE^H (bottom). Bar graphs on top indicate the number of observed intersections. The total cell number per cluster is shown on the right bar graphs. Intersection cut-off was set to 3 to fit on the plot. Astro, astrocyte; CGE, caudal ganglionic

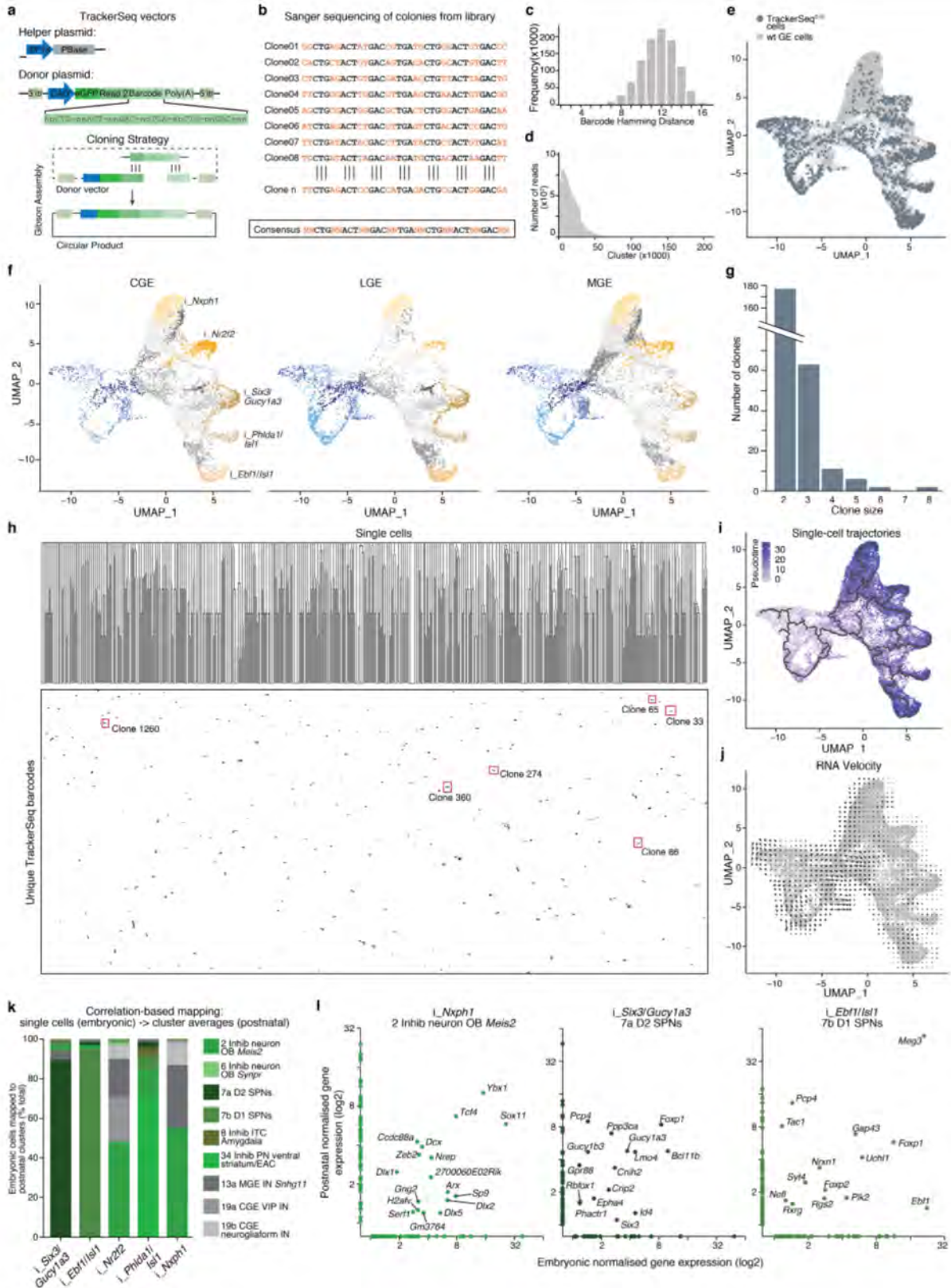
eminence; Ctx, neocortex; EAC, central extended amygdala; Excit, excitatory; Hip, hippocampus; IN, interneuron; Inhib, inhibitory; MGE, medial ganglionic eminence; NP, neuronal precursor; OB, olfactory bulb; Oligo, oligodendrocyte; OPC, oligodendrocyte precursor cell; PN, projection neuron; SPN, spiny projection neuron.



Extended Data Fig. 8 | Lineage divergence in ventral inhibitory neurons.

a, Dot plot showing gene expression markers of ventral inhibitory neuron clusters. The size of the dots indicates the percentage of cells expressing a specific marker gene. The colour of the dots represents the average expression level. EAC, central extended amygdala; Inhib, inhibitory; MGE, medial ganglionic eminence; OB, olfactory bulb; PN, projection neuron; SPN, spiny projection neuron. **b**, Spatial transcriptomic mapping showing localization of ventral inhibitory neuron clusters in the mouse brain. **c**, Schematic representing the workflow for the manual dissection of striatum, olfactory bulb (OB), and amygdala from P6-P8 brains injected with STICR^{E4}. **d**, UpSet plot

displaying clonal intersections amongst and within neuronal clusters of striatum, OB and amygdala. Only dispersing clones are shown. Bar graph at top indicate the number of observed intersections. The total cell number per cluster is represented on the right bar plot. Intersections amongst striatum, OB and amygdala are coloured in green. The heatmap shows the Spearman distance between the log-normalized average cluster gene expression. The insets (top right) are UMAP plots of single cells from striatum, OB and amygdala datasets, with clusters coloured by cell class type. NP, neuronal precursor. **e**, Schematic of lineage divergence for ventral inhibitory neuron cell types.

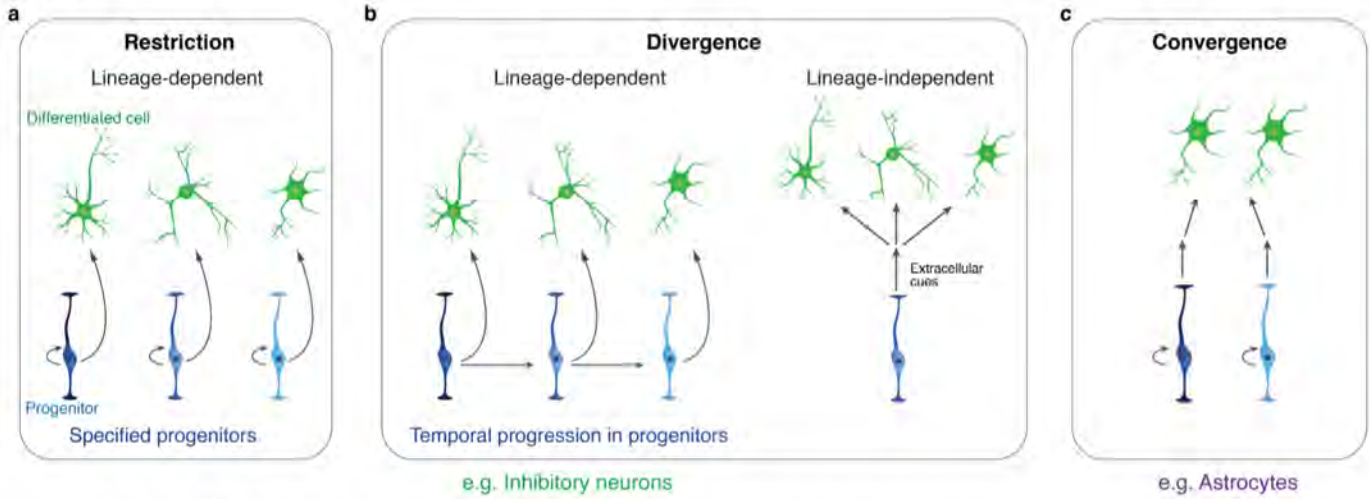


Extended Data Fig. 9 | See next page for caption.

Extended Data Fig. 9 | Characterization of TrackerSeq. **a**, Vector maps and cloning strategy of TrackerSeq. PBase; *piggyBac* transposase. **b**, Sanger sequencing results of individual *E. coli* colonies ('clones'), depicting the consensus sequence of the TrackerSeq lineage barcode. **c**, Pairwise hamming distance of 1000 barcodes randomly sampled from the TrackerSeq library. **d**, -3.6×10^6 raw sequencing reads were collapsed into $\sim 2 \times 10^5$ clusters, where each cluster is defined as a unique lineage barcode. **e**, UMAP plot of embryonic scRNA-seq datasets, cells coloured by dataset type (blue, TrackerSeq; grey, wild type). **f**, UMAP plot of single cells from the caudal, lateral and medial ganglionic eminences (CGE, LGE, MGE) of wild type (wt) embryos, coloured by clusters from Fig. 3c. **g**, Histogram showing distribution of clone sizes for TrackerSeq dataset. **h**, Clustered heatmap of TrackerSeq¹² barcodes. Rows are single GABAergic precursor cells for which both transcriptome and >1

TrackerSeq barcodes were retrieved; column represents unique TrackerSeq barcodes. Highlighted barcodes are those represented in Fig. 3i.

i, Developmental trajectories of single-cell transcriptomes, coloured by pseudotime score. **j**, RNA Velocity plot. Arrows direction represent prediction of cells' future gene expression. **k**, Bar graph quantifying the correlation-based mapping of cells from the 5 embryonic precursor states to clusters of postnatal GABAergic forebrain neurons, including cortical interneuron types. EAC, central extended amygdala; IN, interneuron; Inhib, inhibitory; NP, neuronal precursor; OB, olfactory bulb; PN, projection neuron; SPN, spiny projection neuron. **l**, Scatter plots showing the normalized average cluster gene expression of the top 100 marker genes for a selected embryonic cluster and the top 100 marker genes for a selected postnatal cluster. Clusters were selected based on the mapping efficiency.



Extended Data Fig. 10 | The contribution of lineage to the generation of cell diversity. Schematic illustrating different scenarios of how cellular diversity could arise in the brain. Different cell types could arise from specified or fate-restricted progenitor cells (a), or be born sequentially from a common pool of progenitor cells (b, left). Such lineage-dependent processes suggest that cell-intrinsic mechanisms or local cues at the mitotic progenitor level,

determine the fate of newborn cells. As another option, lineage-independent mechanisms such as extracellular induction, activity-dependent processes, or stochastic regulation (b, right) could drive the differentiation into different subtypes. Lineage-dependent and independent mechanisms are not mutually exclusive. c) Convergence is the process by which similar cell states arise from different lineages.

Reporting Summary

Nature Portfolio wishes to improve the reproducibility of the work that we publish. This form provides structure for consistency and transparency in reporting. For further information on Nature Portfolio policies, see our [Editorial Policies](#) and the [Editorial Policy Checklist](#).

Statistics

For all statistical analyses, confirm that the following items are present in the figure legend, table legend, main text, or Methods section.

n/a Confirmed

- The exact sample size (n) for each experimental group/condition, given as a discrete number and unit of measurement
- A statement on whether measurements were taken from distinct samples or whether the same sample was measured repeatedly
- The statistical test(s) used AND whether they are one- or two-sided
Only common tests should be described solely by name; describe more complex techniques in the Methods section.
- A description of all covariates tested
- A description of any assumptions or corrections, such as tests of normality and adjustment for multiple comparisons
- A full description of the statistical parameters including central tendency (e.g. means) or other basic estimates (e.g. regression coefficient) AND variation (e.g. standard deviation) or associated estimates of uncertainty (e.g. confidence intervals)
- For null hypothesis testing, the test statistic (e.g. F , t , r) with confidence intervals, effect sizes, degrees of freedom and P value noted
Give P values as exact values whenever suitable.
- For Bayesian analysis, information on the choice of priors and Markov chain Monte Carlo settings
- For hierarchical and complex designs, identification of the appropriate level for tests and full reporting of outcomes
- Estimates of effect sizes (e.g. Cohen's d , Pearson's r), indicating how they were calculated

Our web collection on [statistics for biologists](#) contains articles on many of the points above.

Software and code

Policy information about [availability of computer code](#)

Data collection	Flow cytometry was done using a SY3200 Cell Sorter (software WinList 3D version 8.0.) or BD FACSAria III Cell Sorter (BD FACSDiva Software, version 8.0.2).
Data analysis	The following software/packages were utilized in the manuscript: 10x Genomics Cell Ranger software (version 3.0.2 and 5.0.1), Seurat (version 3.1.4), R (version 3.6.0 and version 4.0.1), DoubletFinder (version 2.0.3), Harmony (version 1.0), UMAP (https://github.com/lmcinnes/umap), RNA velocity (R library velocity.R, version 0.17.17, https://velocyto.org), Monocle (version 3), Bartender (version 1.1, https://github.com/LaoZZZZZ/bartender-1.1), BBDMap (version 38.67, BBDMap – Bushnell B. – sourceforge.net/projects/bbmap/), Bowtie (v5.2.1), UMI-tools (v.0.5.1), LARRY (https://github.com/AllonKleinLab/LARRY , modified from last commit on 31 Oct 2018). All in-house scripts for analysis are available at https://github.com/mayer-lab/Bandler-et-al_lineage .

For manuscripts utilizing custom algorithms or software that are central to the research but not yet described in published literature, software must be made available to editors and reviewers. We strongly encourage code deposition in a community repository (e.g. GitHub). See the Nature Portfolio [guidelines for submitting code & software](#) for further information.

Data

Policy information about [availability of data](#)

All manuscripts must include a [data availability statement](#). This statement should provide the following information, where applicable:

- Accession codes, unique identifiers, or web links for publicly available datasets
- A description of any restrictions on data availability
- For clinical datasets or third party data, please ensure that the statement adheres to our [policy](#).

The sequencing datasets generated for the current study are available in the Gene Expression Omnibus (GEO) at GEO accession number. Publicly available gene expression data used for cluster annotation can be accessed as follows: DropViz (dropviz.org) and Mouse Brain Atlas (<http://mousebrain.org/genesearch.html>), Visium Spatial Transcriptomic Datasets for sagittal and coronal sections of the mouse brain provided by 10x genomics (<https://support.10xgenomics.com/spatial-gene-expression/datasets>).

Field-specific reporting

Please select the one below that is the best fit for your research. If you are not sure, read the appropriate sections before making your selection.

- Life sciences Behavioural & social sciences Ecological, evolutionary & environmental sciences

For a reference copy of this document with all sections, see nature.com/documents/nr-reporting-summary-flat.pdf

Life sciences study design

All studies must disclose on these points even when the disclosure is negative.

Sample size	No statistical methods were used to predetermine sample sizes. After filtering out low-quality cells, the following number of cells was analysed: Postnatal (STICR) analyses: 65700 cells; Postnatal (STIRC_AOS) analyses: 12519 cells; Embryonic analyses: 29380 cells.
Data exclusions	During sub-cluster assignment, cells that could not be assigned to a cell type based on marker gene expression were assigned "unknown" and excluded from the lineage analysis (0.76% of the total cells). For analysis of the embryonic datasets, which focused on inhibitory lineages, excitatory neurons were removed. For more details, see methods sections.
Replication	Postnatal (STICR) analyses: 18 samples including 25 brains; Postnatal (STIRC_AOS) analyses: 3 samples including 10 brains; Embryonic analyses: 7 samples including 14 brains.
Randomization	Not relevant to this study; no need to prevent selection bias or bias in treatment assignments.
Blinding	Not relevant to this study; no need to prevent selection bias or bias in treatment assignments.

Reporting for specific materials, systems and methods

We require information from authors about some types of materials, experimental systems and methods used in many studies. Here, indicate whether each material, system or method listed is relevant to your study. If you are not sure if a list item applies to your research, read the appropriate section before selecting a response.

Materials & experimental systems

- | n/a | Included in the study |
|-------------------------------------|---|
| <input type="checkbox"/> | <input checked="" type="checkbox"/> Antibodies |
| <input type="checkbox"/> | <input checked="" type="checkbox"/> Eukaryotic cell lines |
| <input checked="" type="checkbox"/> | <input type="checkbox"/> Palaeontology and archaeology |
| <input type="checkbox"/> | <input checked="" type="checkbox"/> Animals and other organisms |
| <input checked="" type="checkbox"/> | <input type="checkbox"/> Human research participants |
| <input checked="" type="checkbox"/> | <input type="checkbox"/> Clinical data |
| <input checked="" type="checkbox"/> | <input type="checkbox"/> Dual use research of concern |

Methods

- | n/a | Included in the study |
|-------------------------------------|--|
| <input checked="" type="checkbox"/> | <input type="checkbox"/> ChIP-seq |
| <input type="checkbox"/> | <input checked="" type="checkbox"/> Flow cytometry |
| <input checked="" type="checkbox"/> | <input type="checkbox"/> MRI-based neuroimaging |

Antibodies

Antibodies used

Primary antibodies used are: rabbit anti-CUX1 1:500 (Santa Cruz, #SC13024), rabbit anti-GABA 1:2000 (Merck, #A2052), rabbit anti-Ibal 1:500 (Wako, #019-19741), rabbit anti-OLIG2 1:500 (Merck, #AB9610), rabbit anti-SIO0b 1:500 (Merck, #52644), rat anti-CTIP2 [25B6] 1:500 (Abcam, #AB18465). Secondary antibodies used; 647 Alexa Fluor Plus goat anti-rabbit (Invitrogen, #A32733), 555 Alexa Fluor goat anti-rat (Invitrogen, #A21434), 555 Alexa Fluor goat anti-rabbit (Invitrogen, #A21428).

Validation

Below please find description of validation for all primary antibodies used in this study;

Rabbit anti-CUX1 (SC, 513024) is a rabbit polyclonal IgG, whose epitope corresponds to amino-acids 1111-1332 mapping at the terminus of mouse Cux1 protein. Previously used to label excitatory neurons of upper cortical layers (Mattugini et al., Neuron, 2019, 103: 1086-95).

Rabbit anti-GABA (Merck, A2052) is produced in rabbit affinity isolated antibody, previously used to label inhibitory GABAergic neurons (Teissier et al., J. Neurosci., 2010, 30(31): 10563-74).

Rabbit anti-Ibal (Wako #019-19741) is a rabbit polyclonal antibody largely used as standard marker for labelling microglia (Mattugini et al., Neuron, 2019, 103: 1086-95).

Rabbit anti-OLIG2 (Merck AB9610) is a purified rabbit polyclonal antibody, previously used to label oligodendrocytes in the brain in IHC (Teissier et al., J. Neurosci., 2010, 30(31): 10563-74).

Rabbit anti-S100b (Merck, 52644) is a rabbit polyclonal antibody largely used as standard marker for labelling astrocytes (Bengoetxea et al., Front. Cell. Neurosci., 2013, 7:170).

Rat anti-CTIP2 (Abeam AB18465) is a rat monoclonal antibody, previously used to label excitatory neurons of lower cortical layers (Mattugini et al., Neuron, 2019, 103: 1086-95).

Eukaryotic cell lines

Policy information about [cell lines](#)

Cell line source(s) Lenti-X HEK293T (Takara Bio)

Authentication Cell lines were not authenticated.

Mycoplasma contamination Cell Lines were not tested for mycoplasma.

Commonly misidentified lines (See [ICLAC](#) register) No commonly misidentified lines used.

Animals and other organisms

Policy information about [studies involving animals](#); [ARRIVE guidelines](#) recommended for reporting animal research

Laboratory animals See Methods section "Mice and In Utero Surgeries." Swiss Webster Wild Type Females and C57BL/6 Wild Type Females (between 6-10 weeks in age) were used for timed pregnant in-utero injections. In utero surgery and injection of STICR library were performed on embryonic mouse forebrains at E10.5, E12.5, E13.5 and E14.5. Virally injected brains were collected from mouse pups between ages postnatal day 5 to 15 (P5-15). For in utero electroporation of the TrackerSeq library, E12.5 embryos were used, and forebrains were collected at E16.5. For collection of ganglionic eminences, embryos were collected at E13.5 and E15.5. Pregnant dams were kept in single cages and pups were kept with their mothers, in the institutional animal facility under standard 12: 12 h light / dark cycles, room temp: 72° +/- 2° F, humidity: 30%-70%.

Wild animals This study did not involve wild animals.

Field-collected samples This study did not involve samples collected from the field.

Ethics oversight All mouse colonies were maintained in accordance with protocols approved by the IACUC at the NYU Grossman School of Medicine and the Bavarian government at the Max Planck Institute of Neurobiology.

Note that full information on the approval of the study protocol must also be provided in the manuscript.

Flow Cytometry

Plots

Confirm that:

- The axis labels state the marker and fluorochrome used (e.g. CD4-FITC).
- The axis scales are clearly visible. Include numbers along axes only for bottom left plot of group (a 'group' is an analysis of identical markers).
- All plots are contour plots with outliers or pseudocolor plots.
- A numerical value for number of cells or percentage (with statistics) is provided.

Methodology

Sample preparation

Please see "Sample Collection" section of the methods section.

For STICR datasets, brains were dissected in ice-cold pre-bubbled aCSF (Artificial Cerebrospinal Fluid), and sectioned into 400 μ m coronal sections on a Leica VT1200S Vibratome. Coronal brain sections were then dissected such that the forebrain was collected. Alternatively, OBs, amygdalae and striata were manually dissected out from sliced brains, and processed separately. Collected tissue was then dissociated with the Miltenyi BioTech Neural Tissue Dissociation Kit (P) (#130-092-628) on the gentleMACS Dissociator according to the protocol of the manufacturer.

For embryonic TrackerSeq dataset, we collected E12.5-electroporated brains from 2 mouse embryos at E16.5 in Leibowitz

medium with 5% FBS. Papain dissociation system was carried out according to the recommended protocol (Worthington, #LK003150).

Instrument

SY3200 Cell Sorter and BD FACSAria III Cell Sorter

Software

WinList 3D version 8.0., BD FACSDiva Software, version 8.0.2

Cell population abundance

Cell population abundance was less than 1% of the total cells sorted.

Gating strategy

The cell suspensions were first gated on forward scatter, then within this population based Dapi to exclude dead cells, and finally on eGFP expression.

Tick this box to confirm that a figure exemplifying the gating strategy is provided in the Supplementary Information.